



Userguide

Poly-Lock and Poly-Pad



Contents:

Welcome	3
Including the Poly-Pad and the Poly-Lock.....	4
Poly-Lock.....	4
Poly-Pad.....	6
How to get started	8
1 st off.....	8
Adjusting the lock for your door.....	19
Reversing the lock:.....	21
The time the lock is running for locking and unlocking	21
New pin codes:.....	22
Awarding a new pin number:.....	22
Restriction of pin numbers:	23
Remove Pin number:.....	29
Opening the door remotely	30
Sounds from the Poly-Pad:.....	30

Welcome

Congratulations on your new Poly-Pad and/or Poly-Lock

This unique product gives you the opportunity to, in an instant; make your existing door lock wireless.

For instructions on how to mount the Poly-Lock, go to poly-control.com

Below is a brief introduction on how to operate the Poly-Lock.

The Poly-Lock and Poly-Pad has been optimized to work perfectly with your Vera2 gateway.

OBS:

It is very important that you include your Poly-Lock as the first of the Poly-Lock and the Poly-Pad.

When the Poly-Lock is included you must finish the inclusion process and rename the “_Door Lock” which the Vera2 will call it to e.g. “Poly-Lock”

When you have done this, you can continue and put the Vera2 in inclusion mode ones again and include the Poly-Pad

If you don't do this, you will not know which is which.

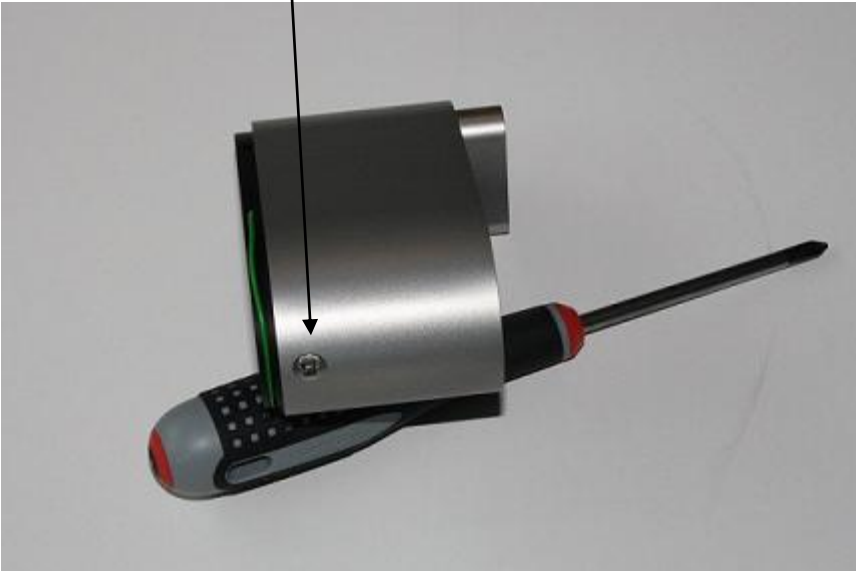


Including the Poly-Pad and the Poly-Lock

To include the product in your Z-wave network please follow the steps below.

Poly-Lock

1. Unscrew the screw in the bottom of the Poly-Lock:



2. Then you remove the cover, the cover will slide of easily.
3. Next you will start to include.
4. Put the Vera2 gateway in inclusion mode
5. Press the inclusion button on the Poly-Lock for 3 seconds



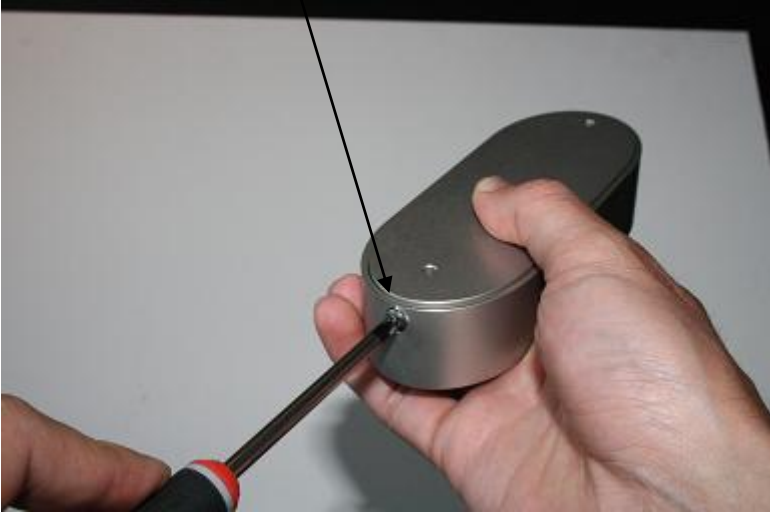
Inclusion button



6. The Vera2 gateway will tell you that it has discovered the new device, and the Poly-Lock is included.
7. Finish the inclusion on the Vera2 gateway
8. Mount the lock as shown in the instructions video found on Poly-Control.com

Poly-Pad

1. Unscrew the screw in the bottom of the Poly-Pad:



2. Slide off the cover, the cover can be a bit tricky to slide off because the watertight gasket is very tight.
3. Put the Vera2 Gateway in inclusion mode
4. Press the inclusion button on the Poly-Pad for 3 seconds





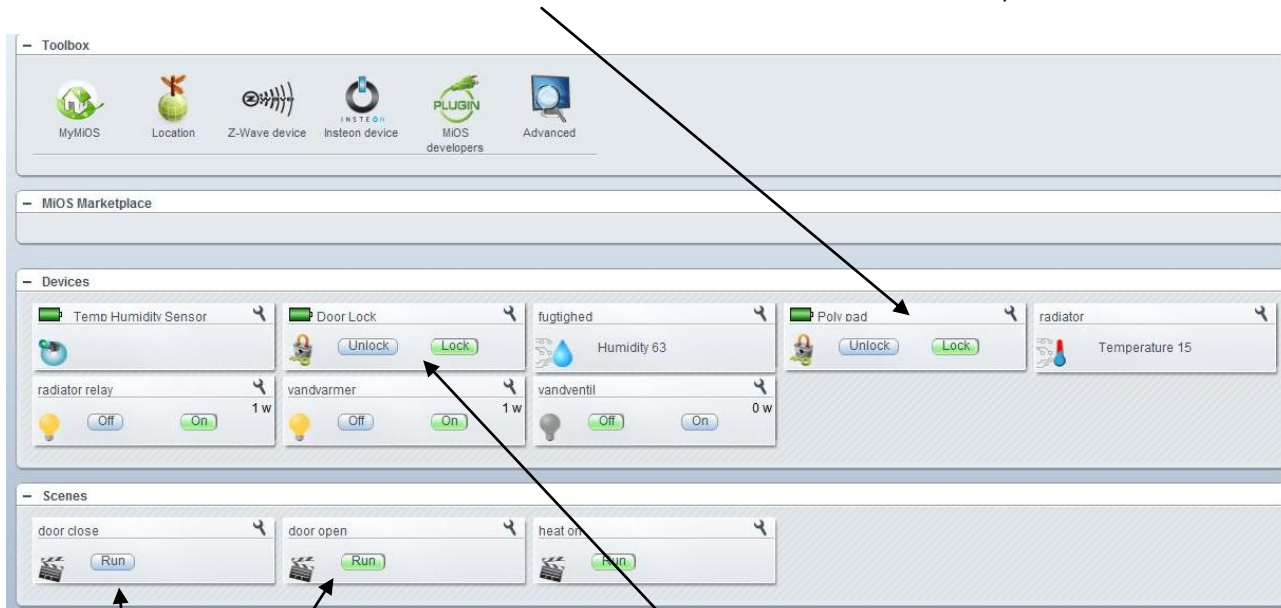
5. Follow the mounting instructions found on the instructions video at Poly-Control.com

You are now ready to use your new Poly-Control products

How to get started

1. When you successfully included you Poly-Control products
2. Log on to your MiCasaVerde UI4
3. To be able to open or lock a door with the Poly-Pad, you will have to make a scene that allows the Poly-Pad to lock and unlock the Poly-Lock
4. This means that you have to make a scene for opening the Poly-Lock and one to lock the Poly-Pad
5. A "door open" scene and a "Door Close" scene

OBS: The buttons   has no function in the "Poly-Pad" window

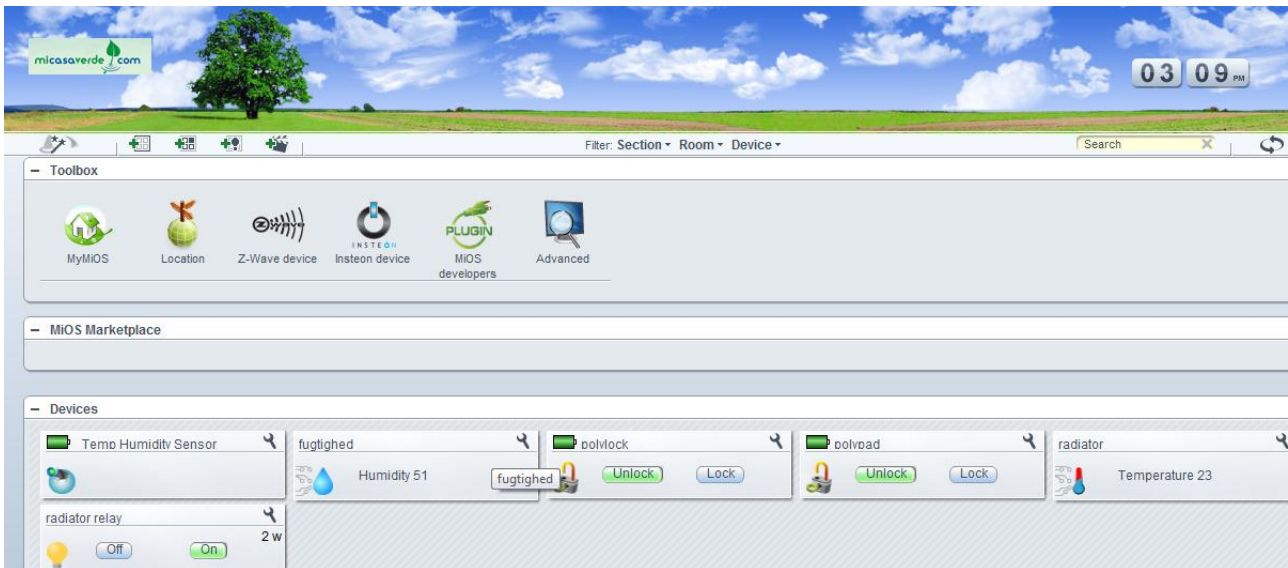


To remote lock and unlock the door use the   buttons in the Poly-Lock window.

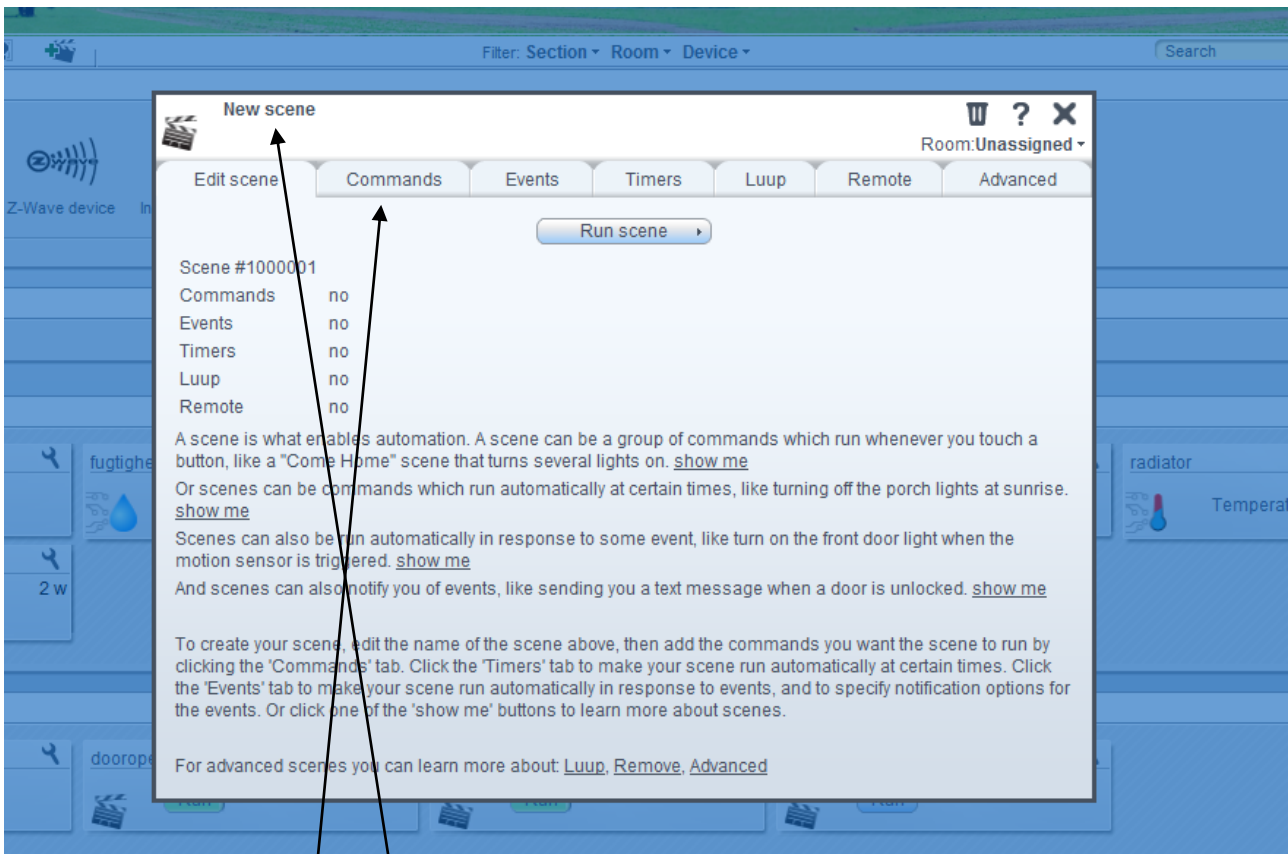
1st off

Making a scene that allows you to lock and open the door with the Poly-Pad

1. Press the scene button



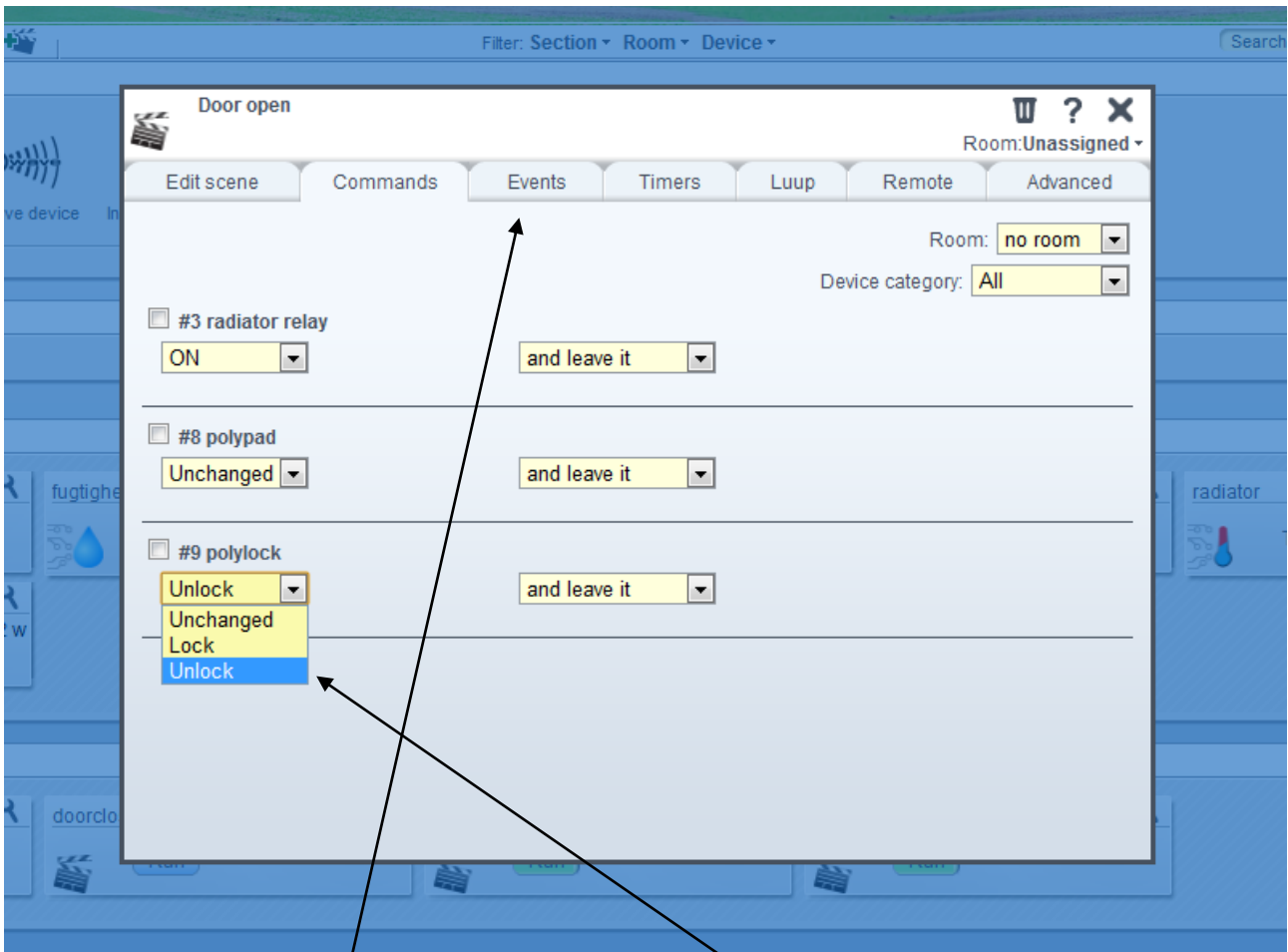
Then you will have to start making your scene.



Give your scene the name "Door open"

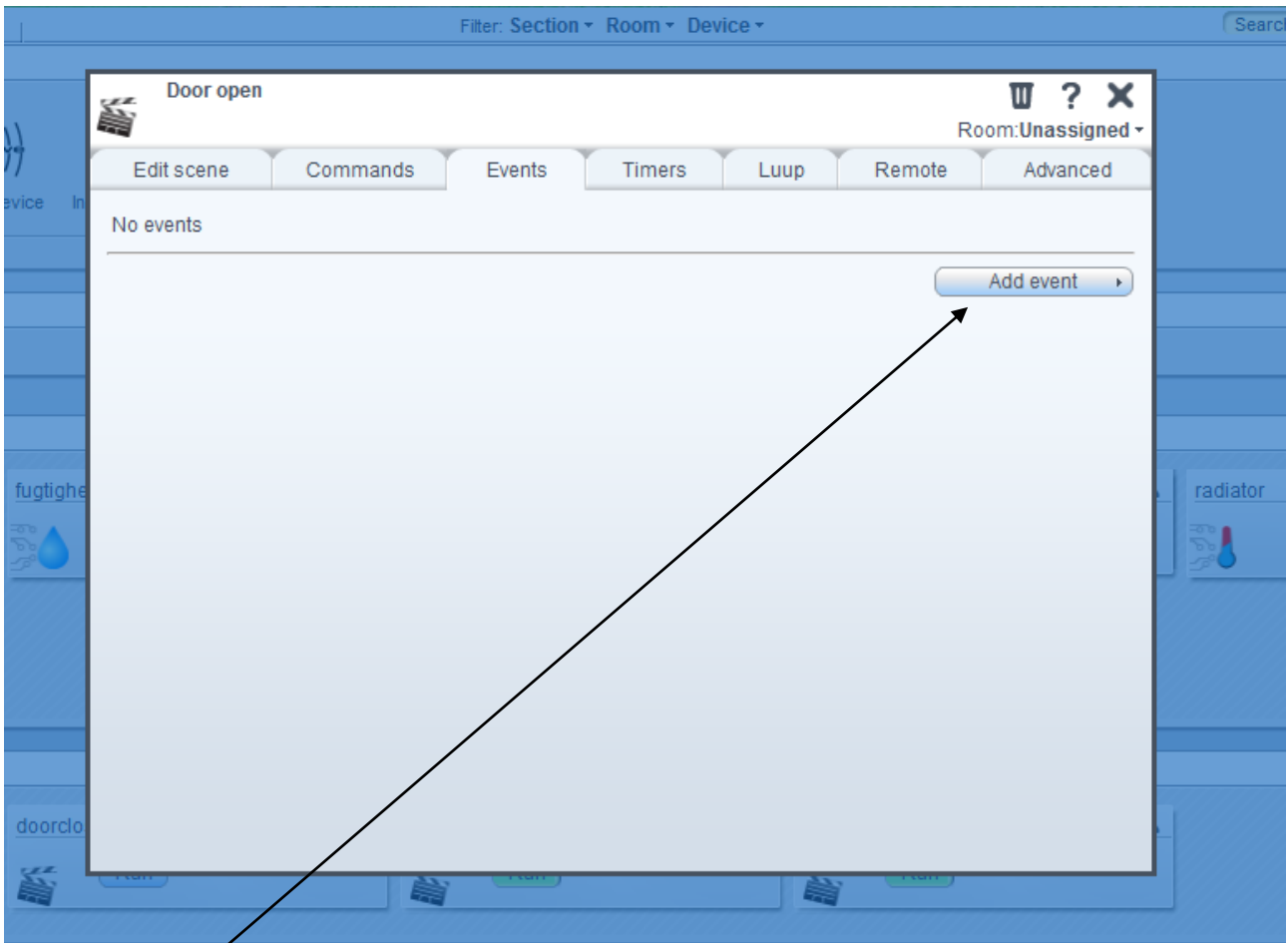
Then click the tab "Commands"

A new window:

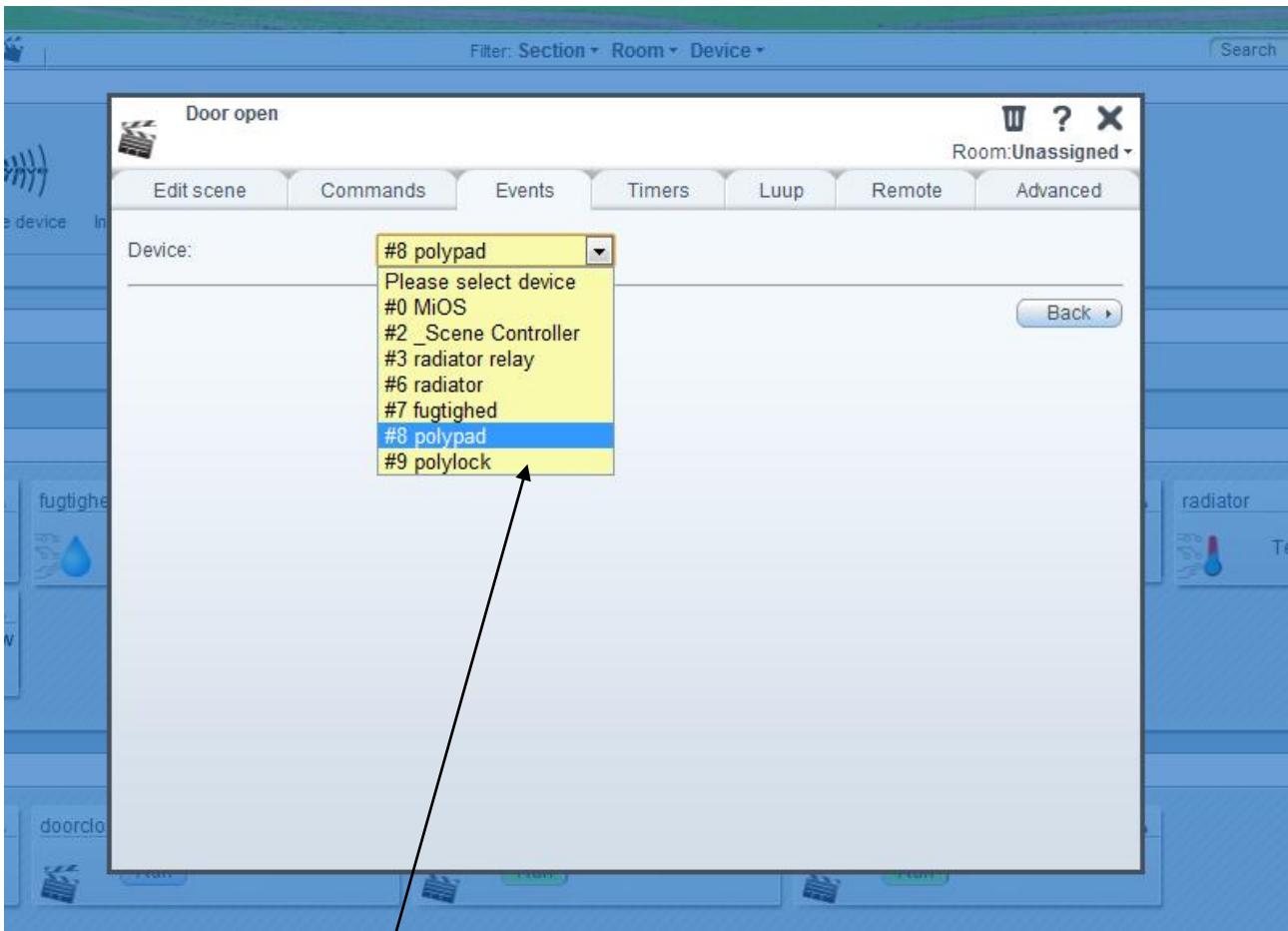


Choose in the dropdown menu under "polylock" – "unlock"

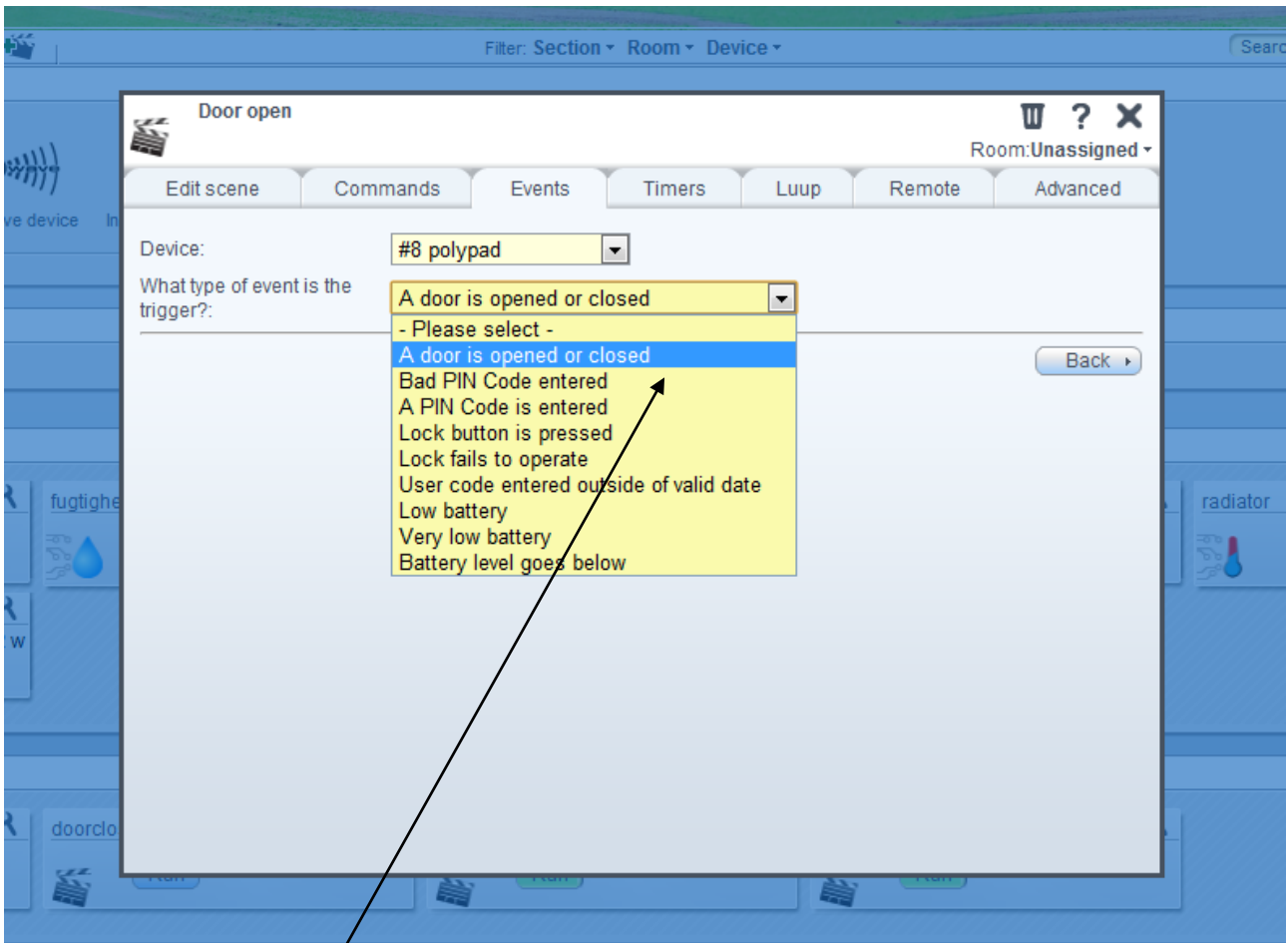
Then click the tab "Events"



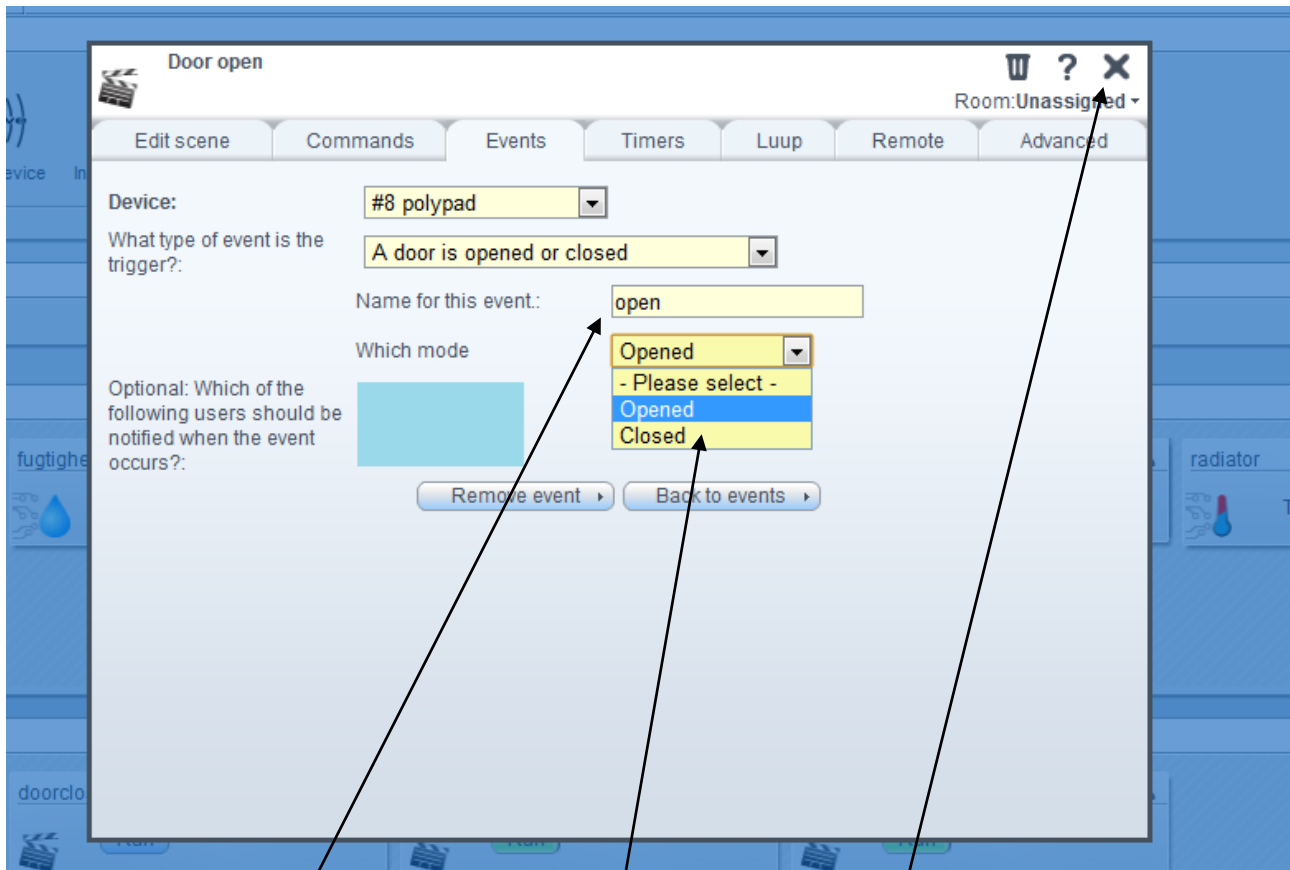
And "Add Event"



Then you choose the "polypad" in the dropdown menu



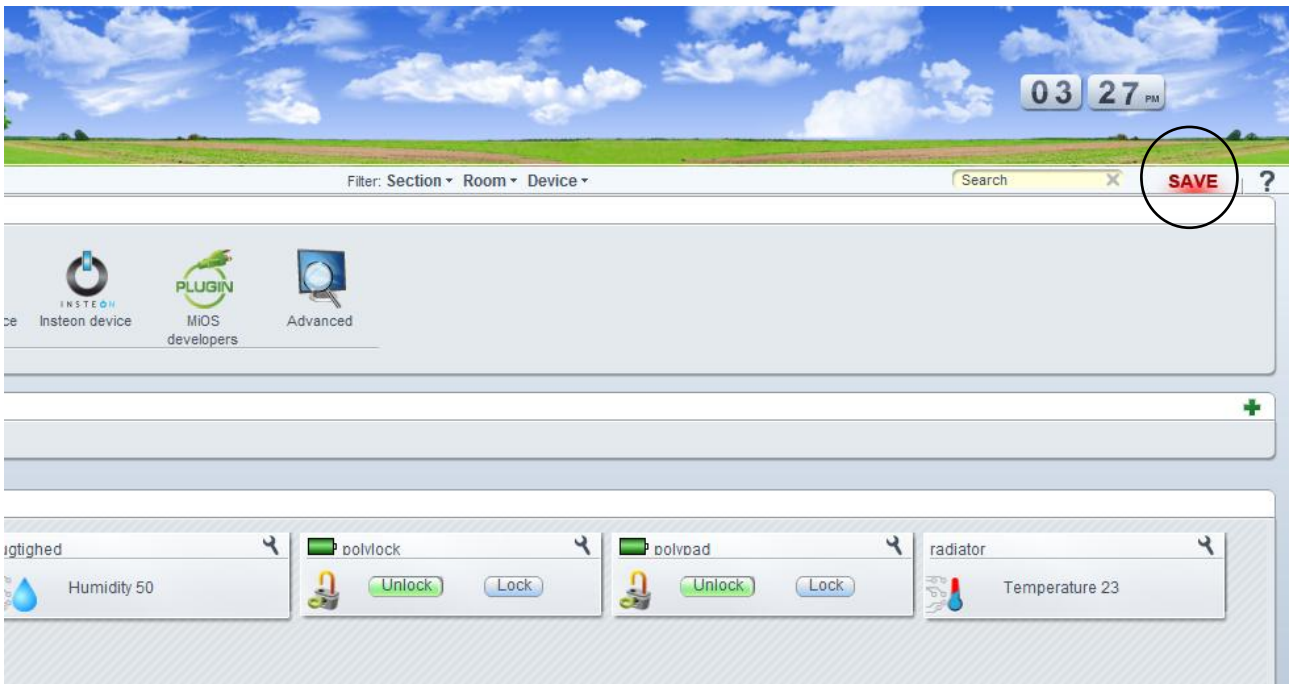
Choose "A door is opened or closed"



Name the event "open" and choose "Opened" in the dropdown menu

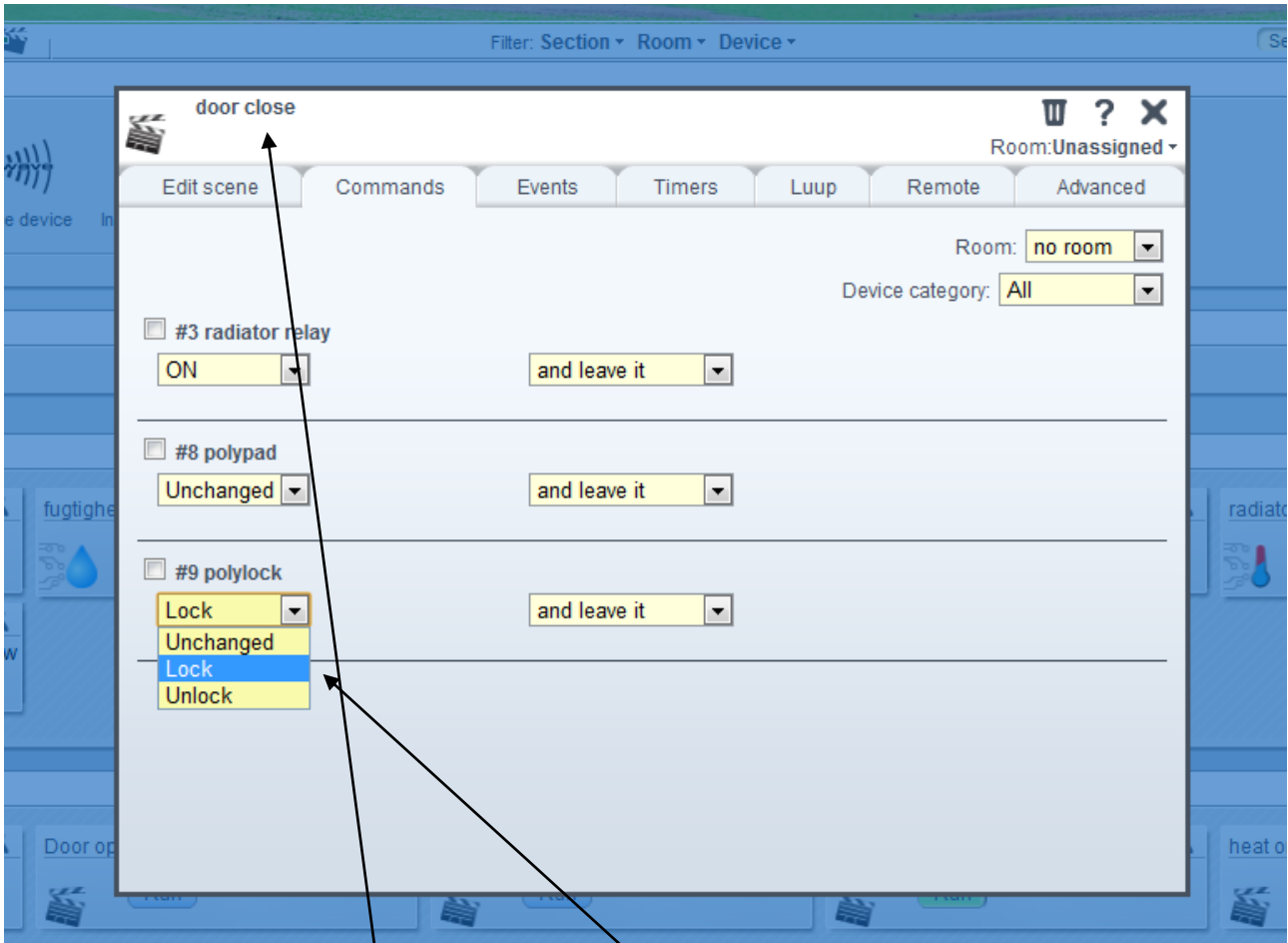
When this is done press the X in the top right corner of the window.

Finally to finish and save all your changes press the red "Save" Button on the home screen

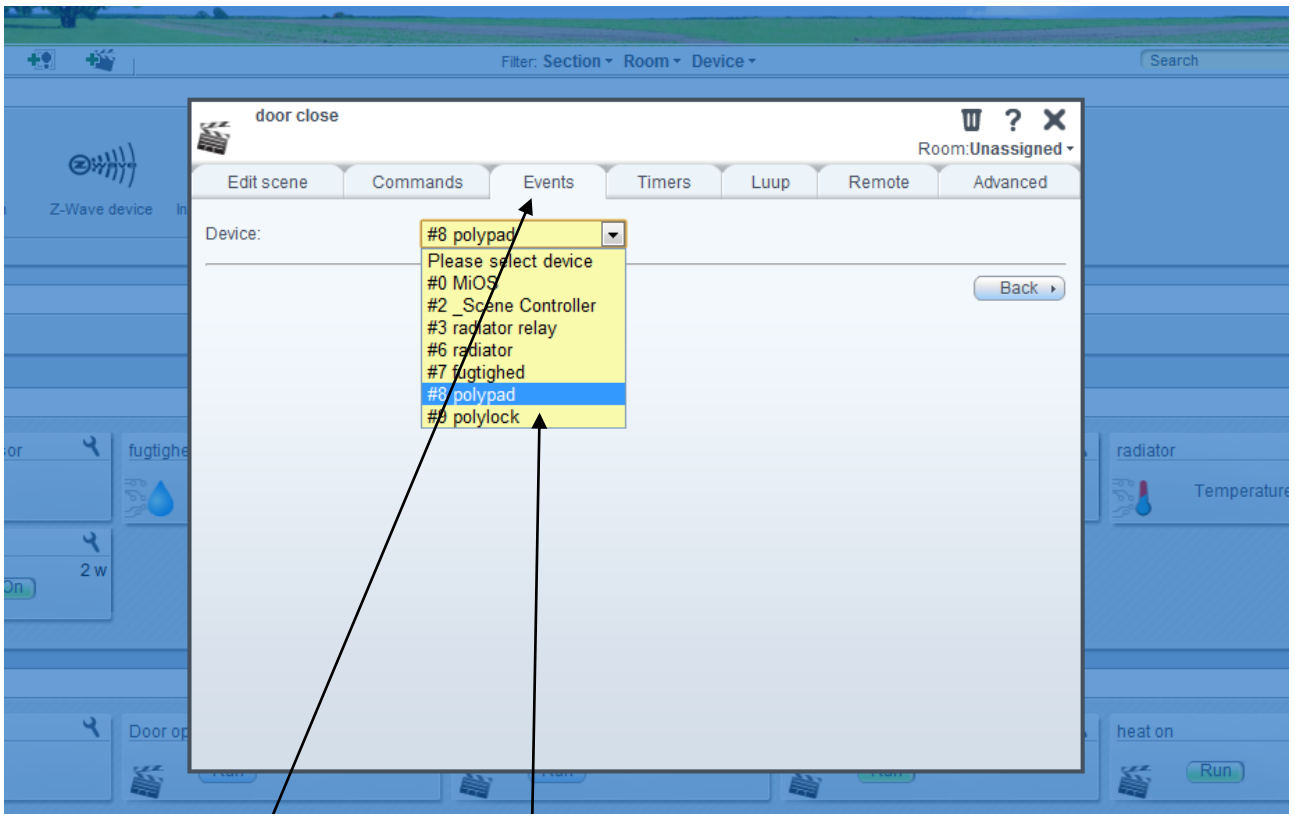


Follow the steps on the next pages to finish.

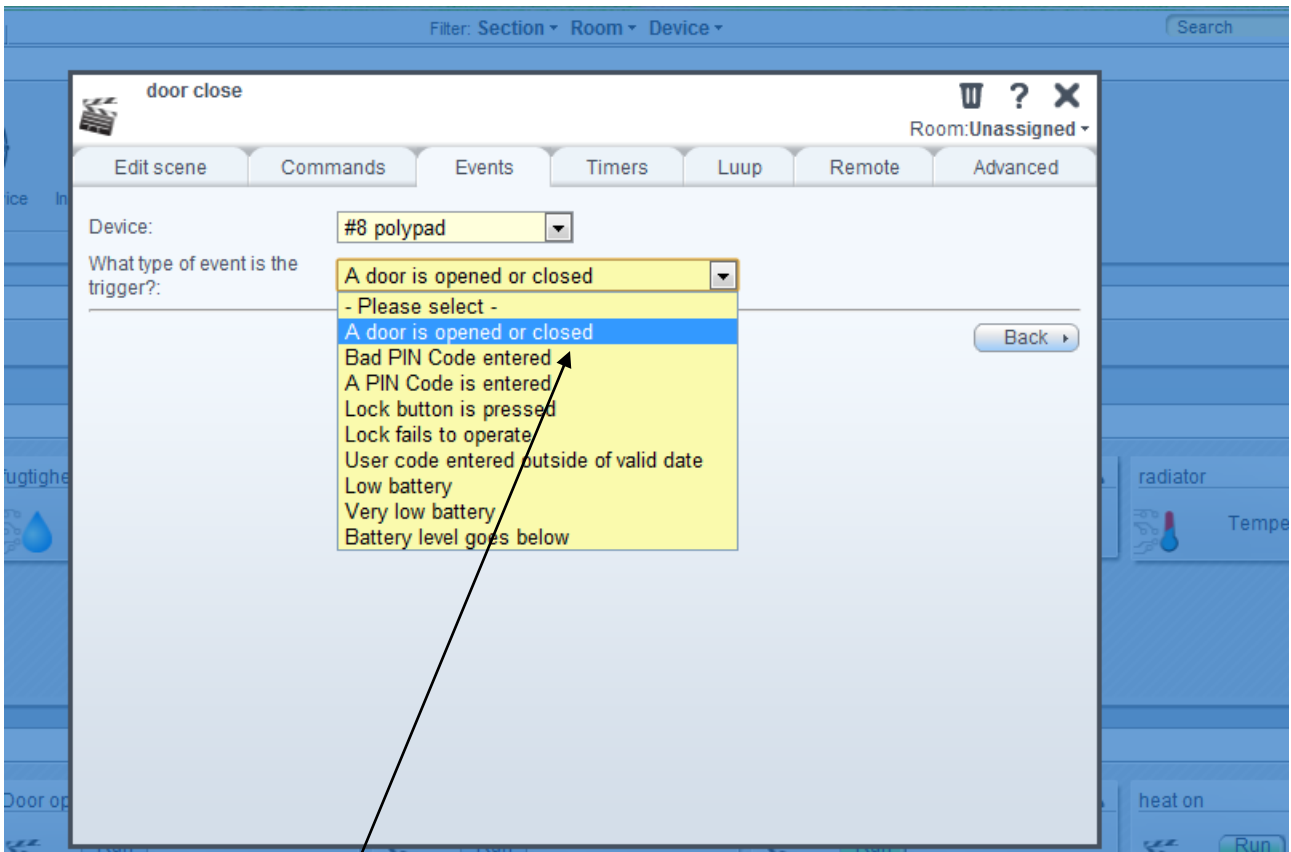
Now make the scene for the door to close.



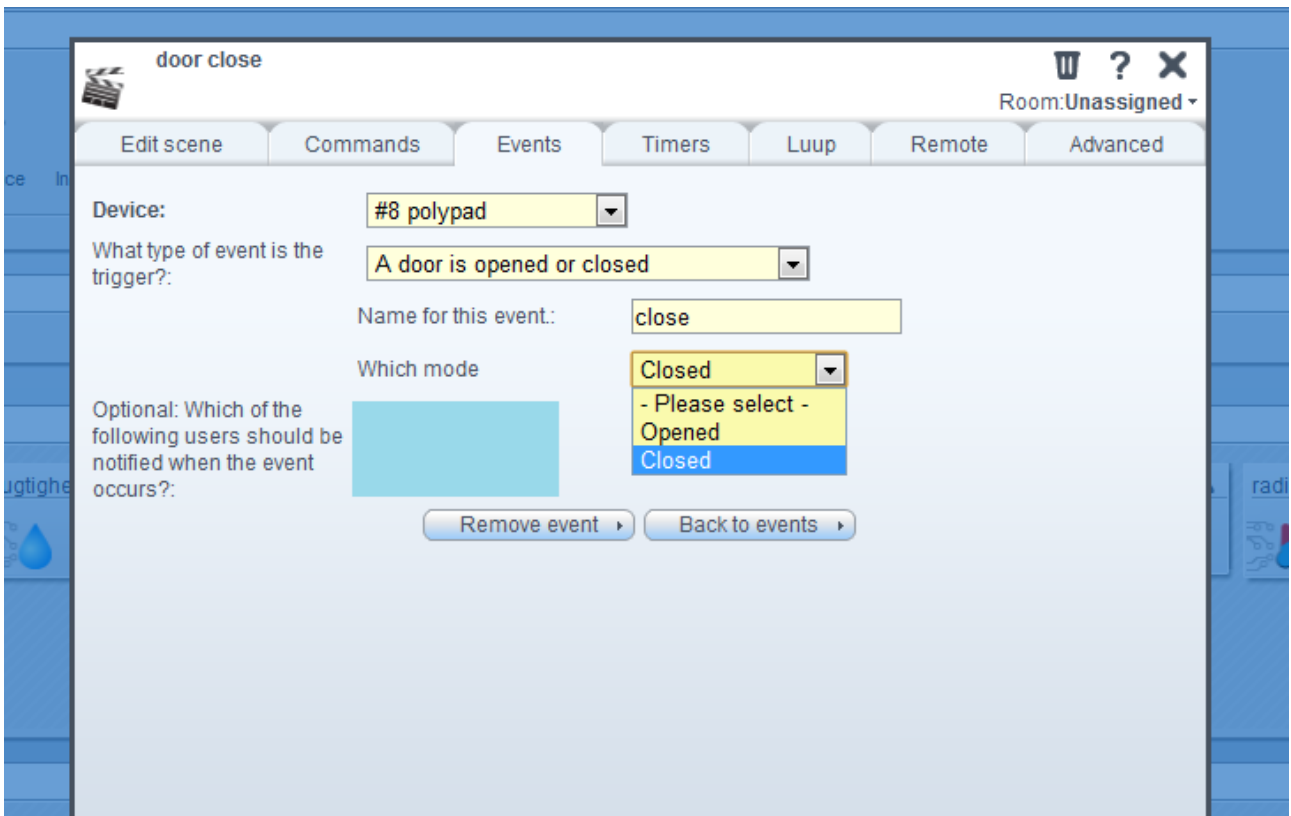
Name the scene "door close" and choose "Lock" in the dropdown menu.



Under the tab "events" choose "polypad" in the dropdown menu once again.



Choose "A door is opened or closed"

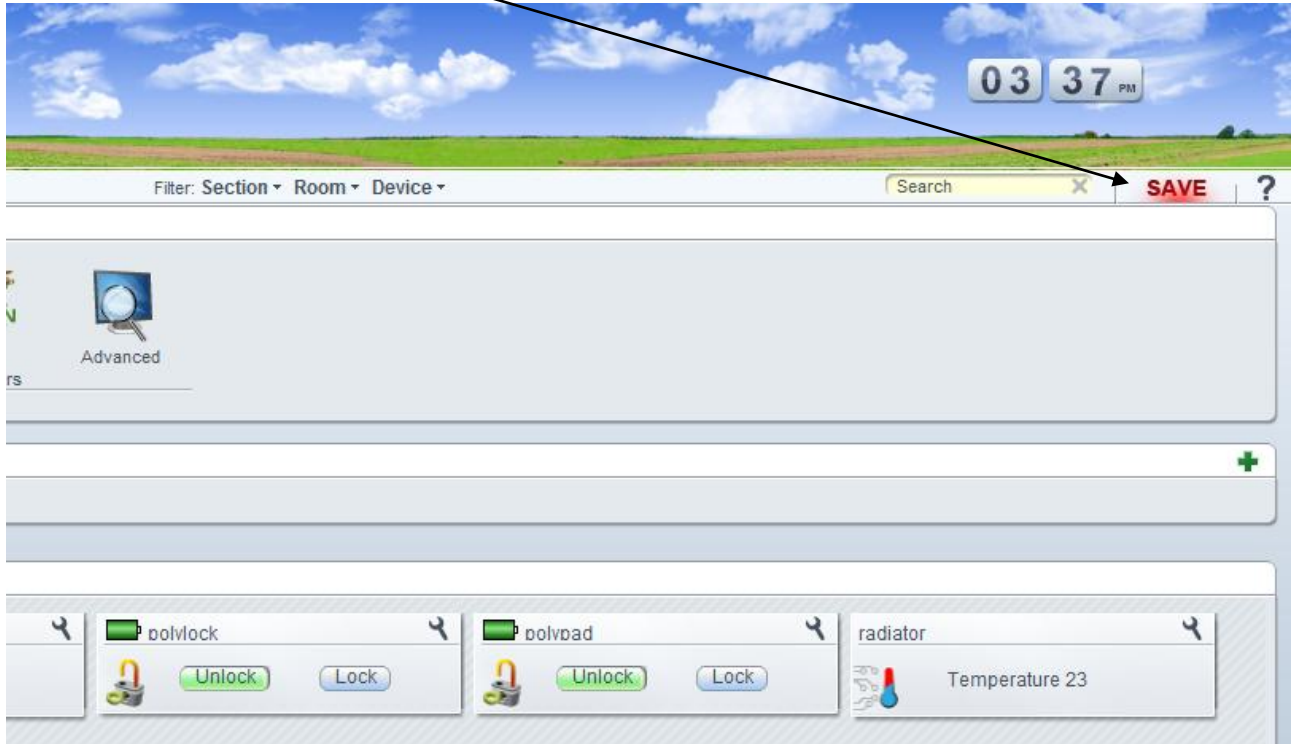


Name the event "close"

Choose "closed" in the dropdown menu

Finish off by clicking the X in the corner of the window.

Then finally click the red "save" button.



Now you are ready to use your Poly-Lock and your Poly-Pad.

Adjusting the lock for your door

When the lock is installed you will probably need to adjust the lock.

The two main issues to adjust is:

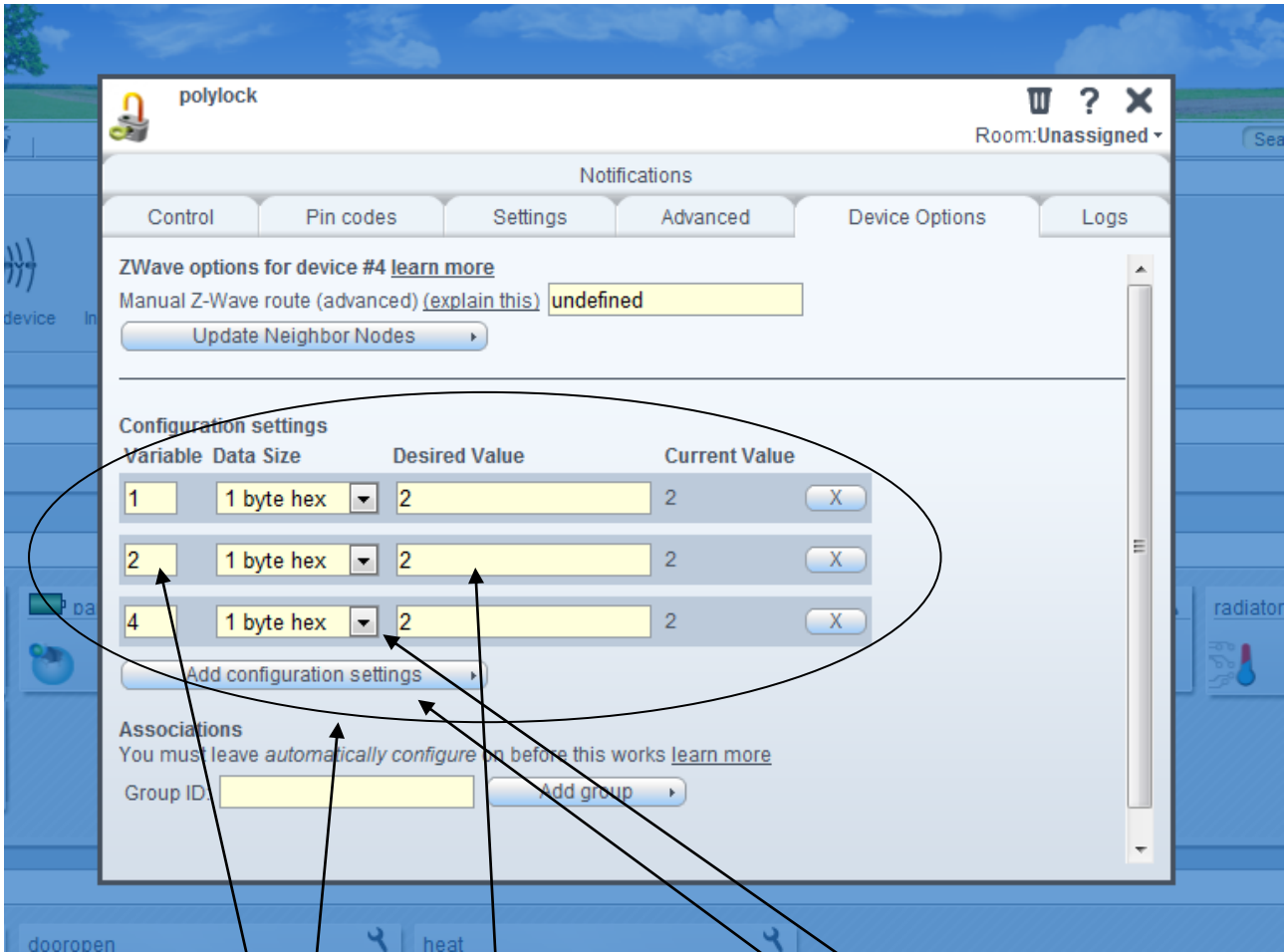
- **The time the lock is turning**, to make sure that it locks the door completely.
- **Reverse the lock**, this meaning that it is working opposite, meaning that the lock is locking when you press "unlock" on the Poly-Pad and vice versa.

Time the lock is turning

To make sure the lock is locking completely you will have to adjust the time the lock is turning. To do this follow the following steps.

Log in and choose the "tool" for the Poly-Lock you want to adjust.

Then choose the tab "Device Options"



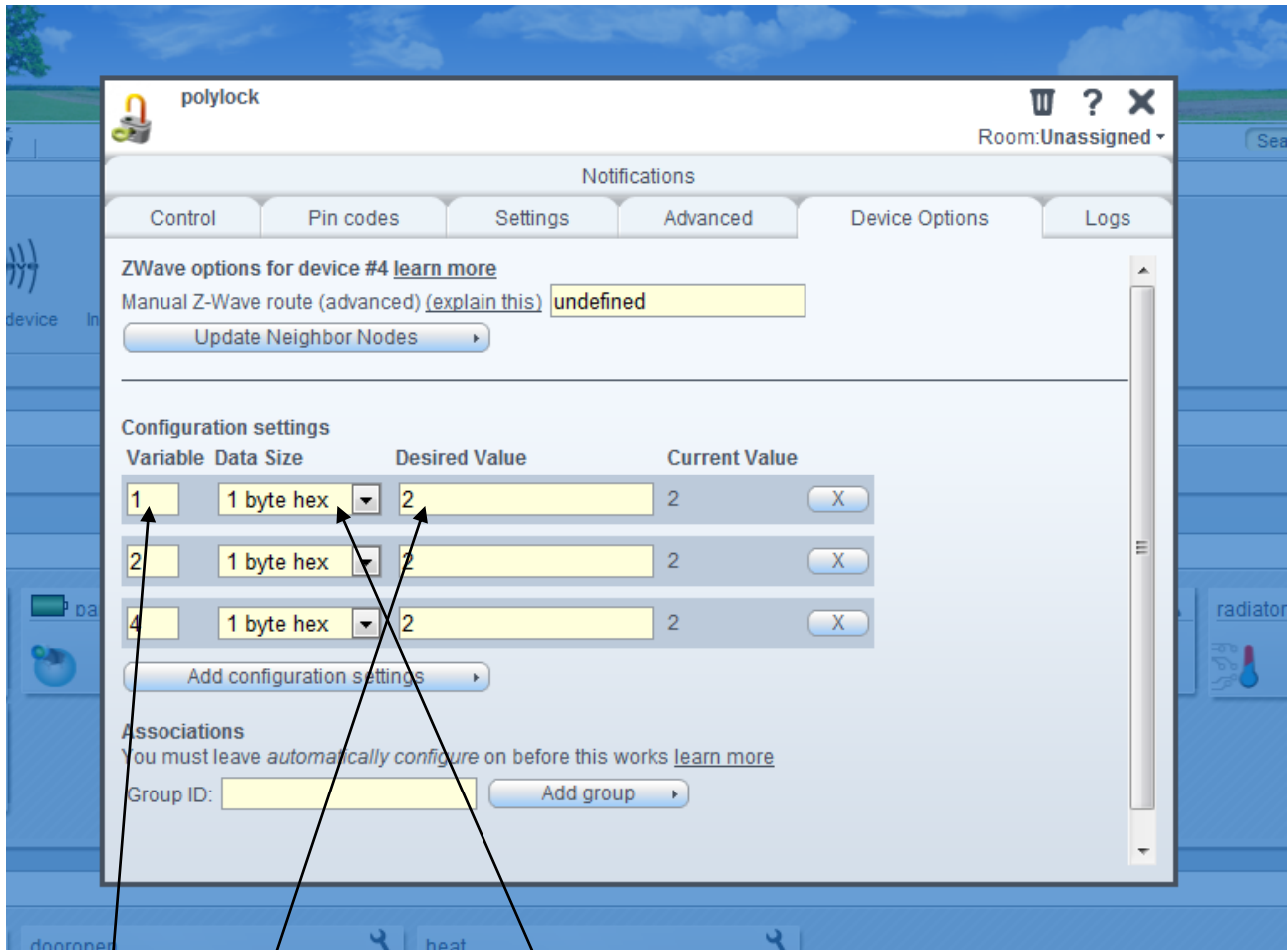
This is where the adjustments are made.

You can write numbers in these textboxes. You also have to use these dropdown menus. Finally you will have to write the "Desired Value"

If you don't have any "configuration settings" for starters, you just "add configuration setting", one for reversing the lock, one for the time the lock should be running when it locks and one for the time the lock should be running when it is unlocking.

Reversing the lock:

Type "0" in the text box, choose "1 byte hex" in the dropdown and finally write 0=normal direction (the direction the lock is running now) or 1=reverse direction



The time the lock is running for locking and unlocking

Locking:

Type "1" in the text box and choose "1 byte hex" in the dropdown, and finally write the number of seconds the lock should be running (1-15 sec.)

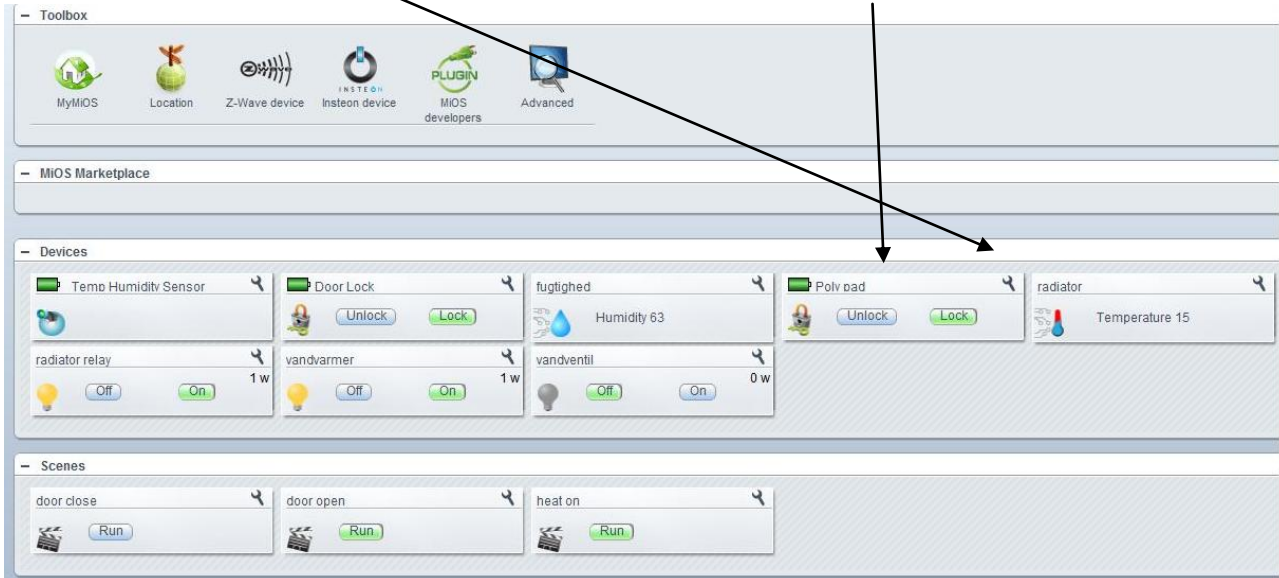
Unlocking:

Type "2" in the text box and choose "1 byte hex" in the dropdown, and finally write the number of seconds the lock should be running (1-15 sec.)

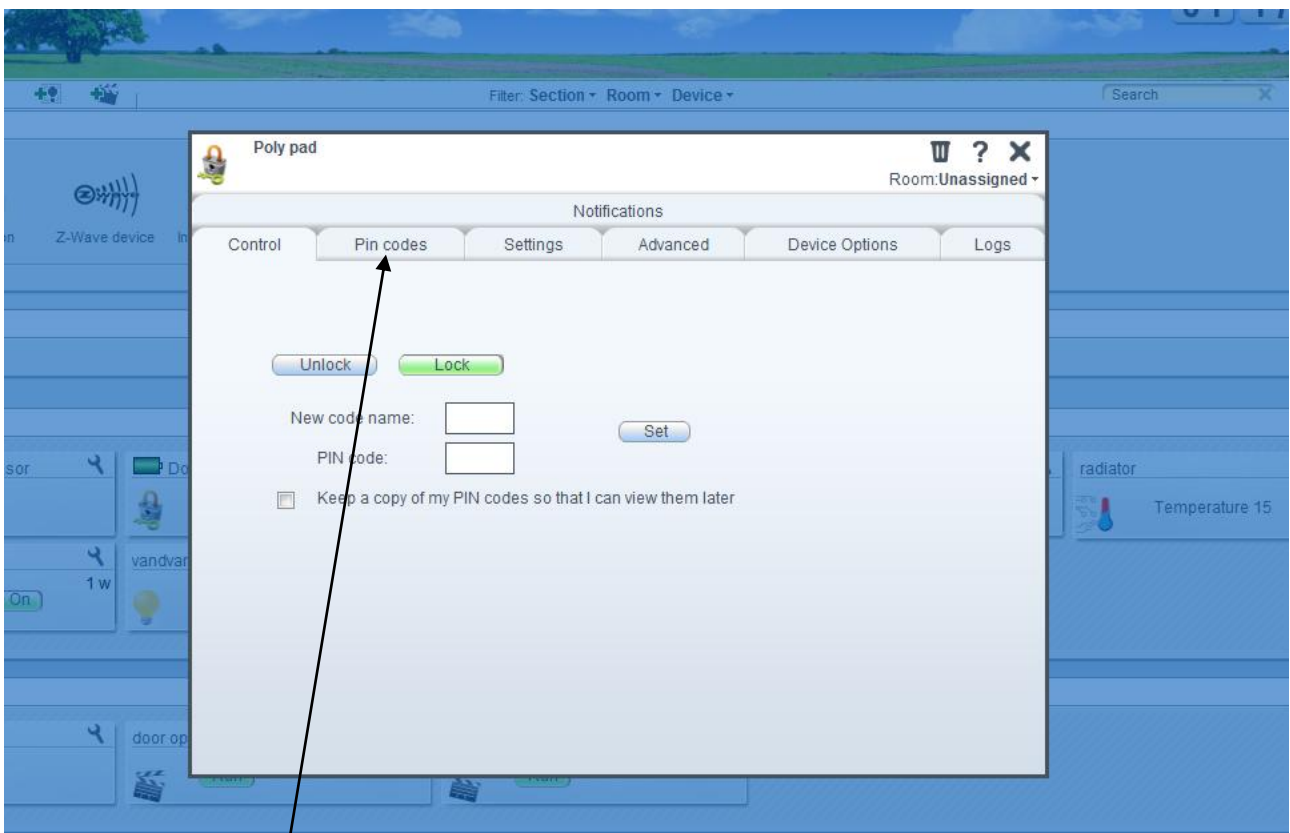
New pin codes:

Awarding a new pin number:

You click on the small tool in the corner of the "poly-Pad" window

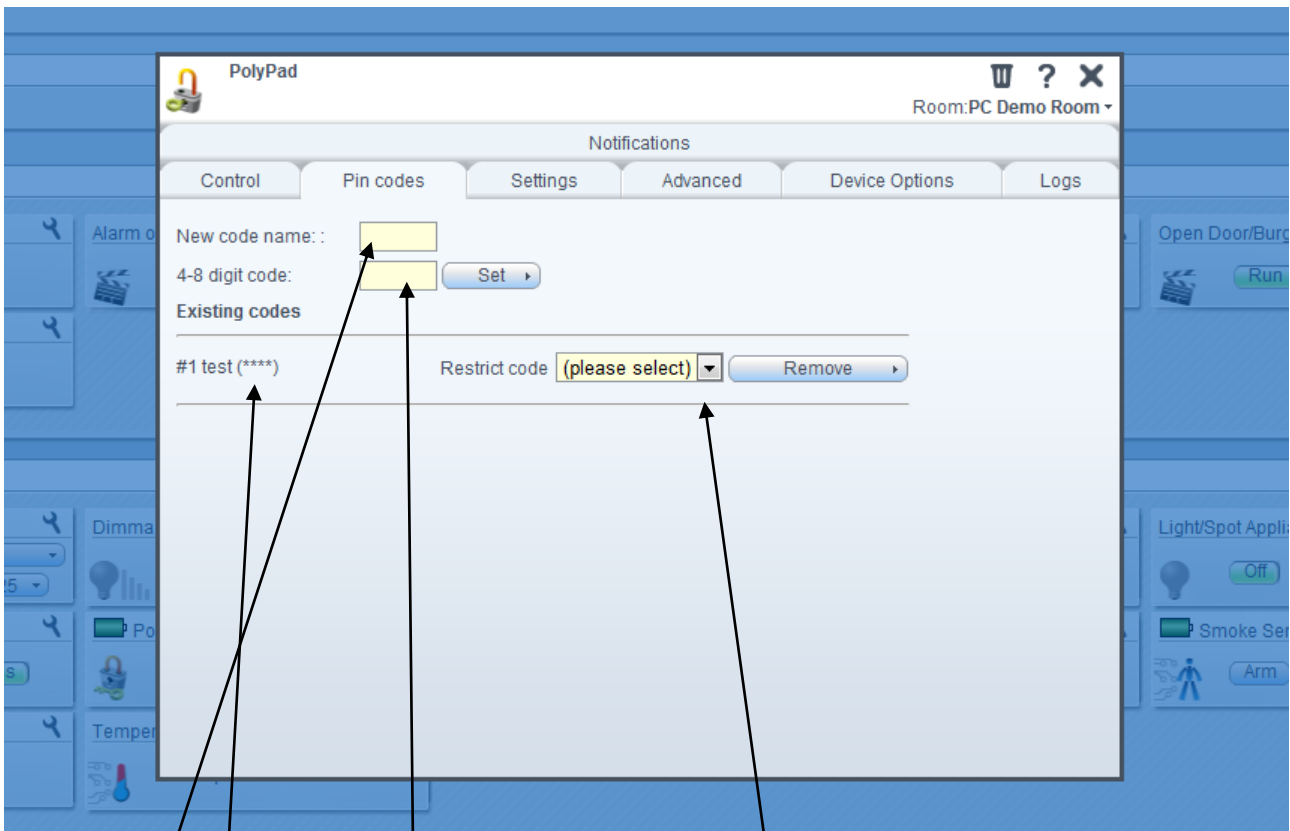


This makes the following window appear:



Choose the "Pin codes" tab

A new window:

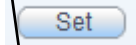


Here you can award the new pin number.

Pick a name for the pin number, this could be the initials of the pin holder.

In the next tab you write the pin number, the pin number can be between 4-8 digits, we recommend 4 digits.

when you have picked the new pin number chose:



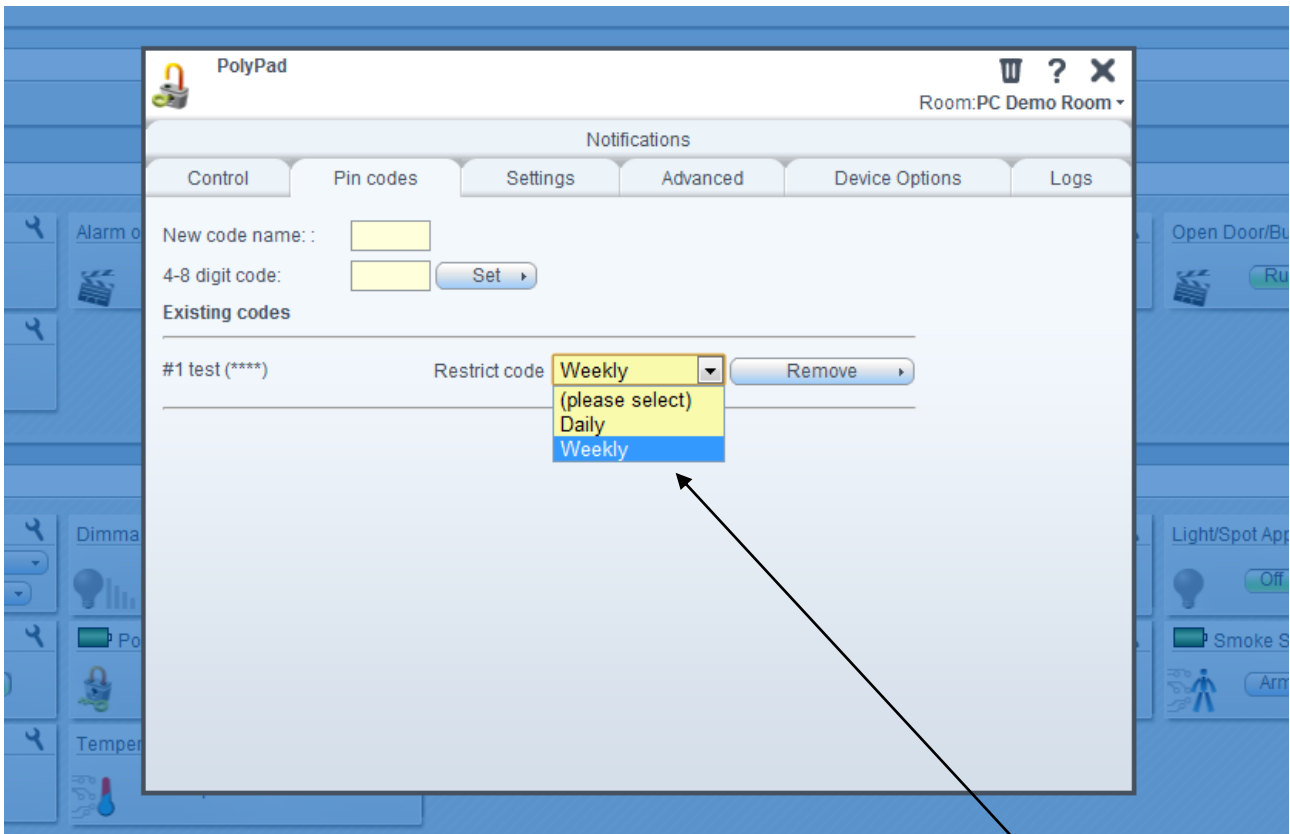
This will send the pin number to the gateway, and it will work instantly, if the Vera2 gw tells you that the operation went fine.

The pin numbers for the particular Poly-Pad, will show below.

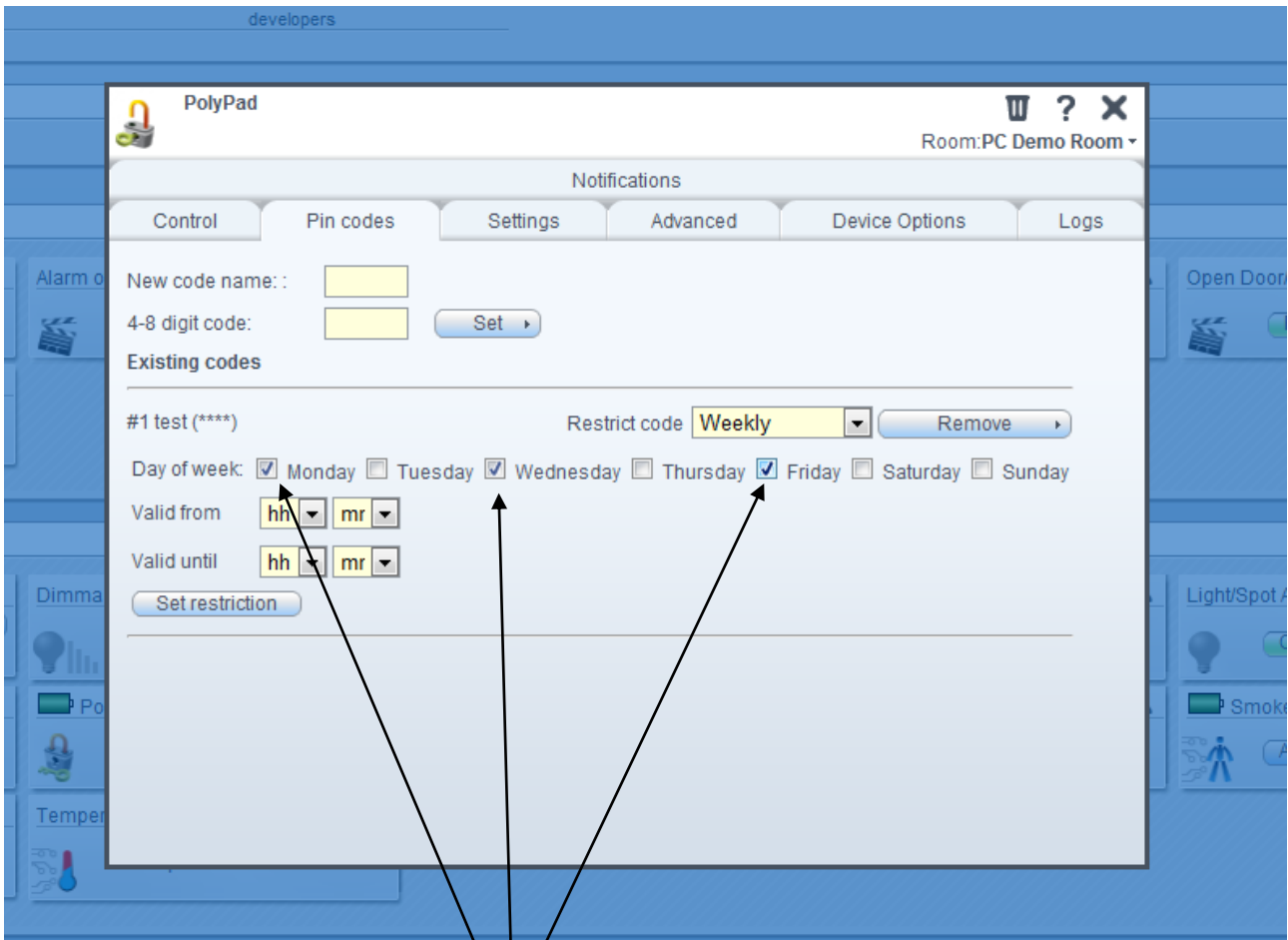
Restriction of pin numbers:

If you want to put on restrictions for a pin number press: "restrict code"

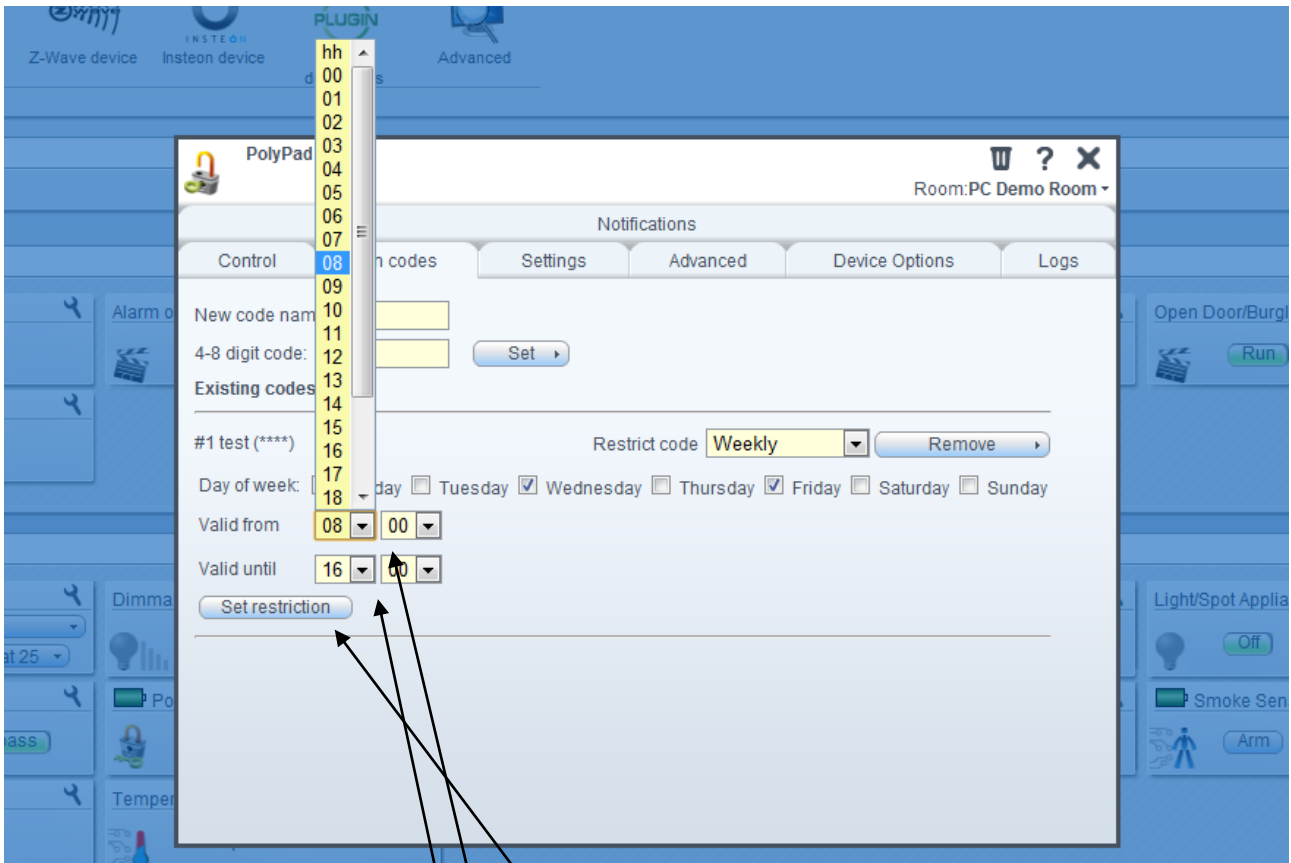
By clicking a dropdown menu will appear:



If you only want the pin number to be working certain days choose: "Weekly"

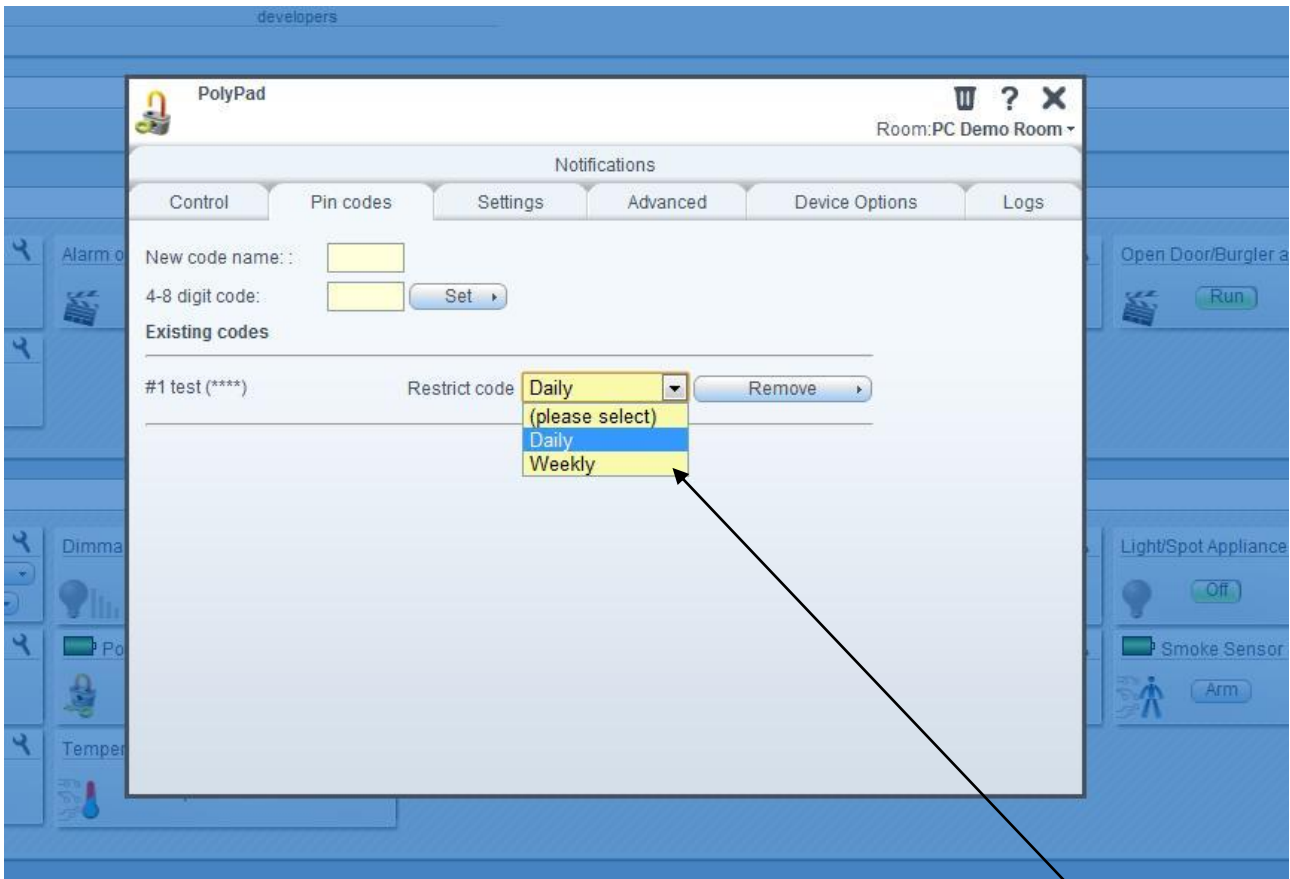


Then you choose which days you want the pin number to work.

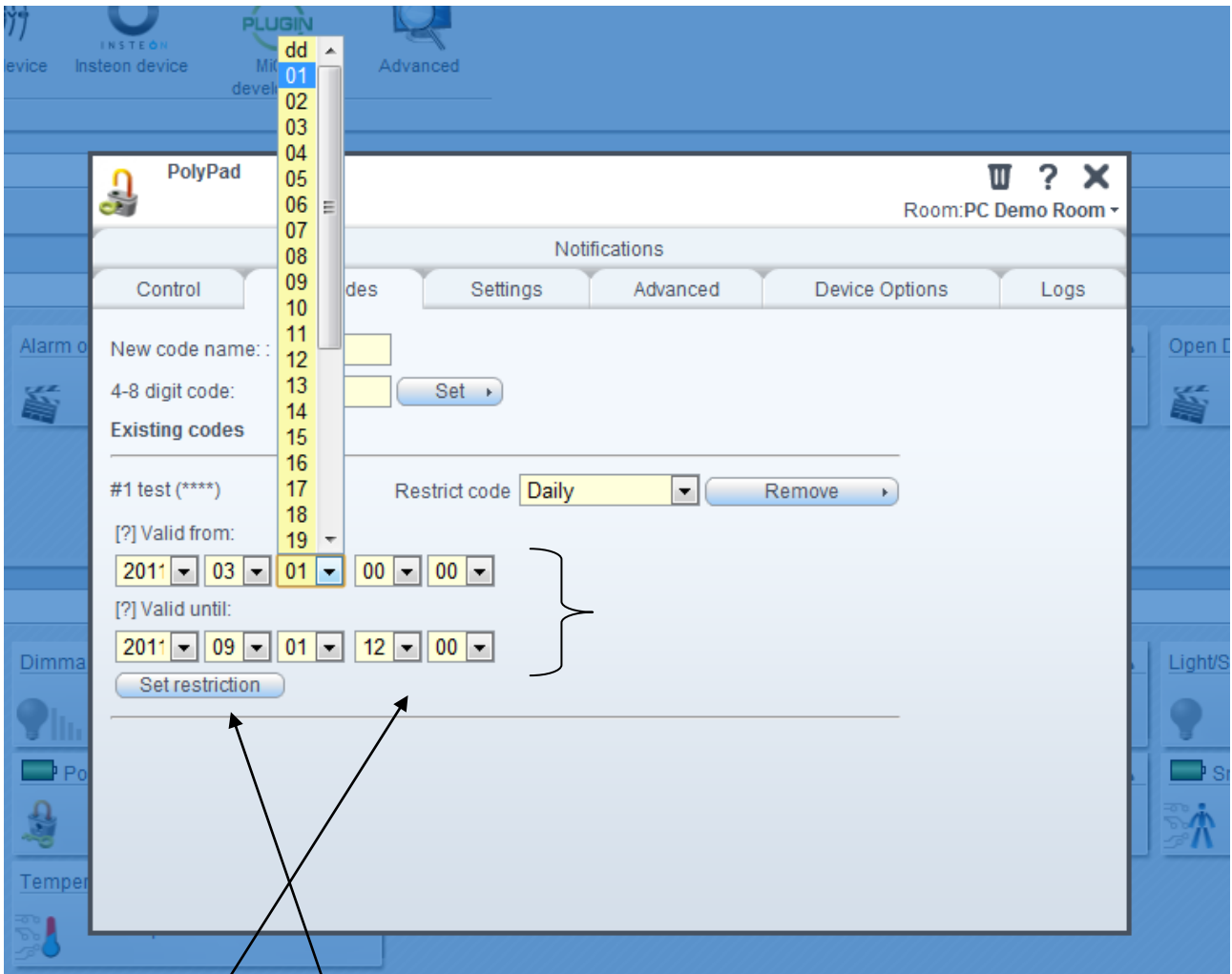


Then choose in which time period you would like the pin number to work

To finish the restrictions press: 

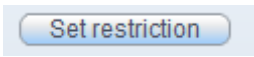


To choose a time period for the pin number to work based on dates press "Daily" in the dropdown menu.



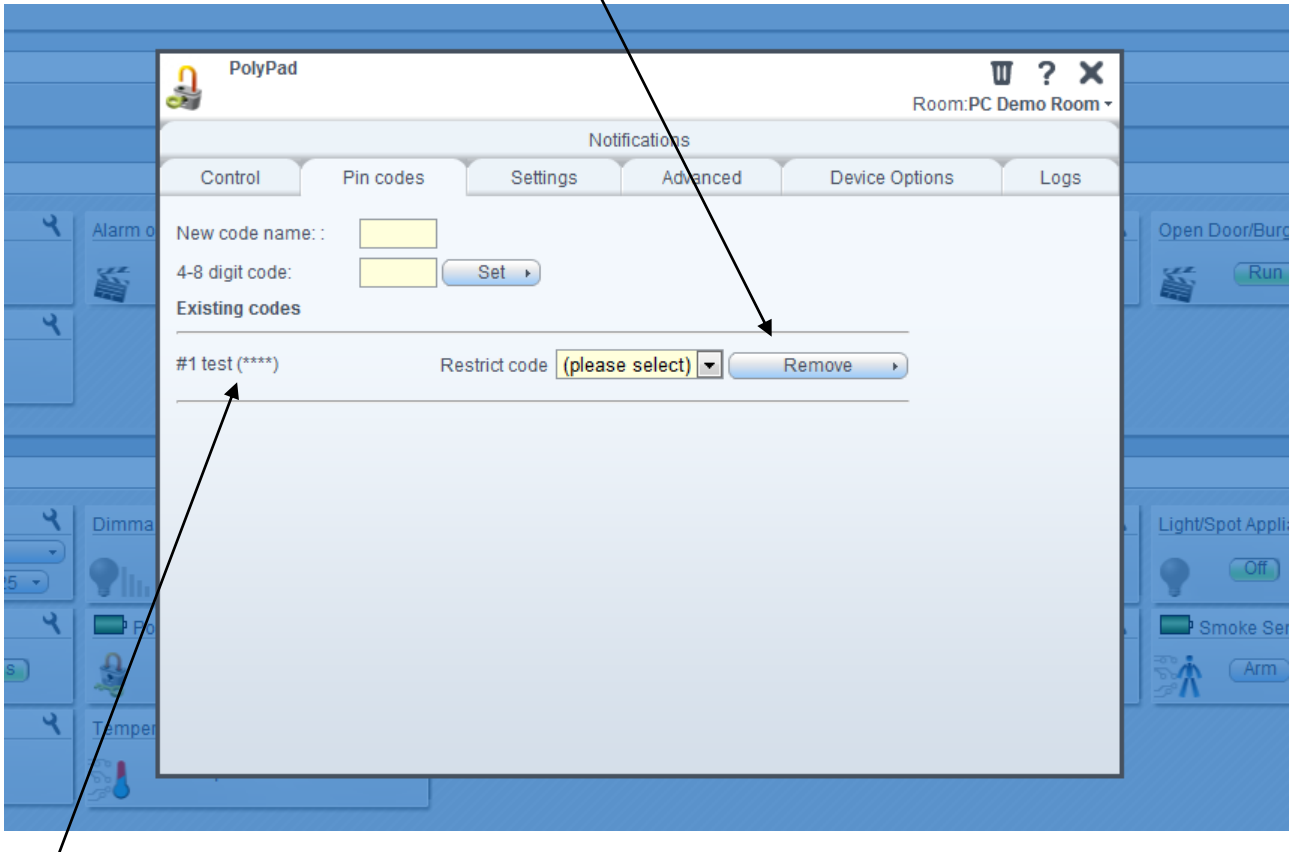
Choose the date

Finish by clicking



Remove Pin number:

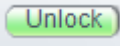
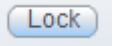
To remove a pin number press the "remove button" next to the pin number in the "Pin Code" menu:

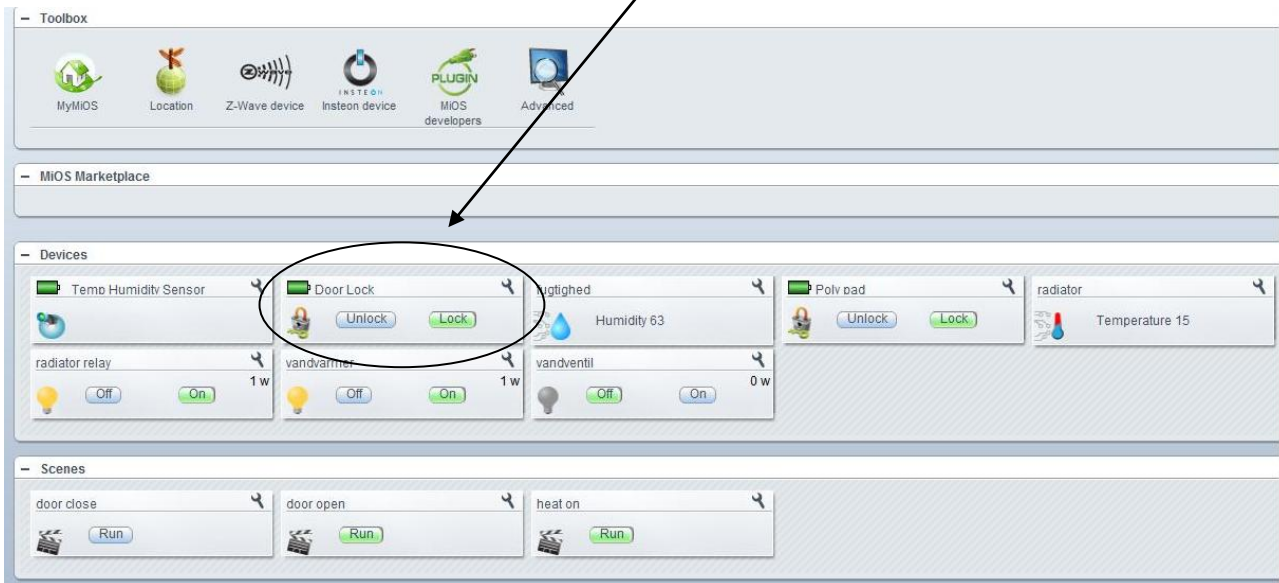


OBS: It will be a short while before the pin number disappears from the list.

Opening the door remotely

To open or lock the door remotely choose the “Poly-Lock”, then choose

  to open or lock the door.



Sounds from the Poly-Pad:

When a correct pin number is pressed it will be followed by 1 long beep, and afterwards the Poly-Lock will unlock or lock.

When a wrong pin number is pressed it will be followed by 3 short beeps.