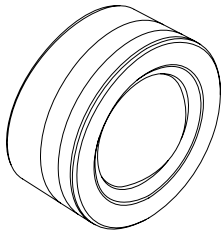


USER GUIDE



PIR - MOTION SENSOR



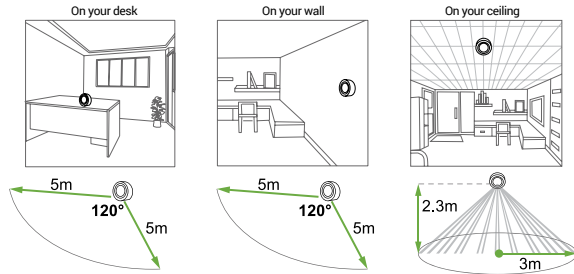
PIR Motion Sensor by NodOn®

Reference: PIR-2-1-0x
Power supply: battery CR123A 3V
Lifetime: 5 years
Center radio frequency : 868.3 MHz
Occupied frequency band : 868.0 to 868.6 MHz
RF power Max : +3dBm
Wireless range: Up to 30 meters
Detection range: Up to 5 meters
Lux sensing: 0 to 1000Lux
Operational temperature: -10°C / 45°C
EEP (Profil EnOcean®): A5-07-03
Dimensions: 65 mm (l) x 65 mm (L) x 39 mm (h)
Weight: 54 g
Warranty: 2 years

The NodOn® PIR Motion Sensor allows to detect motion and trigger actions directly on your actuators (such as NodOn® Smart Plug, NodOn® In-Wall module, etc...) or through your EnOcean® compatible Home Automation gateway. Use your NodOn® PIR Motion Sensor in standalone mode with a NodOn® actuator to perform simple and construction work-free Smart Lighting Management, or integrate it into your EnOcean® Smart Home ecosystem.

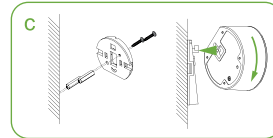
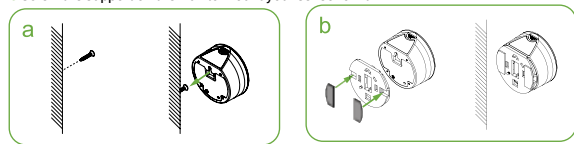
INSTALLATION

Thanks to its shape and the included accessories, you can install your PIR Motion Sensor anywhere in your house.



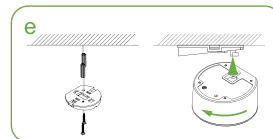
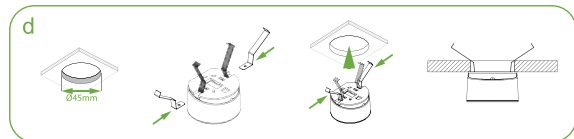
ON YOUR WALL

- Use a screw to hang your sensor on the wall.
- Stick your sensor on the wall with the double sided tape.
- Screw the support on the wall to mount your sensor on it.



ON YOUR CEILING

- Drill a 45mm diameter hole in thin ceiling to insert the included fastening hooks and mount the support in them.
- Mount your sensor into the support.



REPLACING THE BATTERY

In order to replace the battery open the product following the below instructions. Please, make sure you don't touch the sensing part located in the middle of the circuit board.



PAIRING PROCEDURE

The NodOn® PIR Motion Sensor can work in 2 modes:

- **Standalone Mode:** by directly controlling compatible receivers (such as NodOn® Smart Plug, NodOn® In-Wall Module (1 or 2 Channels), ...)
- **Gateway Mode** by notifying the Gateway about the motion Status (Movement / No More Movement).



STANDALONE MODE

To pair the PIR Motion Sensor with another receiver:

- 1 Put the receiver into «Pairing Mode».
- 2 Do a single push on the PIR Motion Sensor « Pairing » Button.

On NodOn® compatible receivers (Smart Plug, In-Wall Module, etc...), it's possible to create a Smart Control System only with the PIR Motion Sensor and the receiver(s).

The state of the receiver before entering it into « Pairing Mode » defines the receiver state when movement will be detected. When no movement is detected, the receiver will be in the opposite state. Check below table for details:

Pairing Mode	Usage	
	Sensor status	Final receiver state
ON	MOVEMENT	ON
	NO MOVEMENT	OFF
OFF	MOVEMENT	OFF
	NO MOVEMENT	ON

GATEWAY MODE

To pair the PIR Motion Sensor with a gateway:

- 1 Put your Gateway into « Pairing Mode ».
- 2 Do a single push on the PIR Motion Sensor « Pairing » Button.

The sensor will report the « Movement » / « No More Movement » Status to the Gateway.

SETTINGS

The NodOn® PIR Motion Sensor embeds several settings, for both Standalone and Gateway Mode.

WALK TEST MODE

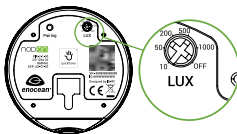
When the product is powered-up for the first time (of after removing the battery), the sensor enters into « Walk Test Mode ». During 3 minutes, the LED will flash every time a motion is detected. Use this feature to find the perfect location, and its efficiency, for your sensor.

LIGHT SENSITIVITY

The NodOn® PIR Motion Sensor embeds an ambient light sensor, allowing to only detect movement under a luminosity level:

If the ambient light is below the limit defined by the potentiometer, an ON or OFF frame will be sent when motion is detected. The feature can be deactivated by placing the potentiometer on position OFF.

Default position: OFF.



AUTO OFF-TIME SETTING

In Standalone Mode (directly paired with a receiver), the NodOn® PIR Motion Sensor is capable to Switch ON or OFF a receiver when Motion is detected, as well as capable to Switch OFF or ON a receiver when no more Motion is detected.

Typically, if no motion is detected during a certain time, the PIR Motion Sensor will automatically send an ON or OFF frame (depending how it has been paired to the receiver - Check the « Pairing Procedure »). This time is called the « Auto-Off Time ». Please note that the counter is resetted every time a motion is detected.

To enter in the Auto-Off Time setting, long press 3sec on the « Pairing » button. The LED is glowing to let you know you are in the « Setting Mode ».

While in the « Setting Mode », press once the button to select the willing Auto-Off Time. At every press, the LED will blink a number of time to confirm the current setting (Check below table for details)

Auto off-time	30sec	5min	15min	30min
Number of press after glowing	1 st press	2 nd press	3 rd press	4 th press
LED blinks	1	2	3	4

« Setting » Mode will be automatically exit, and the setting memorized, after no action on the button during 5sec. By default, the Auto-Off time is set on 30sec.

Best Practice

In a hallway, or some place where people are just passing by, set up the Auto-Off time to a small value, to automatically switch OFF the light as fast as possible (and save energy).

In a meeting room or some place where people are pretty static, set up the Auto-Off time to a big value, to avoid the light switch ON/OFF while you're still in the room. Once you'll leave the room, the light will be automatically switched ON (or OFF) after the Auto-Off time is elapsed.

LOW BATTERY INDICATOR

The LED will flash twice every 10sec when the battery need to be replaced.

HEARTBEAT SETTING

The Heartbeat is an automatically triggered frame, and is sent every 30min. It contains information from the sensor, such as current Lux level, battery level and current sensor state (Movement / No Movement). By default the Heartbeat is activated.

To deactivate (or activate) the Heartbeat, press 3 times on the « Pairing » button.

If the LED glows 1 time, the Heartbeat will be set OFF.

If the LED glows 2 times, the Heartbeat will be set ON.

If you want to change this parameter, press again 3 times on the « Pairing » button.

PICTOGRAM



This product is compliant with all relevant European standards.



This product must be used indoor only.



When sorting your waste, please observe the disposal regulations in force. Please place your waste in the facilities provided for that purpose and with all due respect for the environment.



This product is compliant with EnOcean® radio protocol.

enocean®

CONTACT

Manufacturer & Importer :

1D-RF SAS
121 rue des Hêtres
45590 ST CYR EN VAL (FRANCE)

AFTER SALES

www.nodon.fr section "support"
contact@nodon.fr

For user guides in other languages, please visit
www.nodon.fr/notices