

DOOR/WINDOW SENSOR

QUICK INSTALLATION GUIDE v1.4

TRADEMARKS

Zipato and the Zipato logo are registered Trademarks. All other product names mentioned herein may be trademarks or registered trademarks of their respective companies.

NOTICE

Although Zipato has attempted to ensure the accuracy of the content of this manual, it is possible that this document may contain technical inaccuracies, typographical, or other errors. Zipato assumes no liability for any error in this publication, and for damages, whether direct, indirect, incidental, and consequential or otherwise, that may result from such error, including, but not limited to loss of data or profits. Zipato provides this publication "as is" without warranty of any kind, either express or implied, including, but not limited to implied warranties of merchantability or fitness for a particular purpose. The published information in the manual is subject to change without notice. Zipato reserves the right to make changes in the product design, layout, and driver revisions without notification to its users. This version of the Installation guide supersedes all previous versions.

ELECTROMAGNETIC COMPATIBILITY

When operated according to manufacturer instructions, the product complies with all applicable CE harmonised standards from EMC Directive 2004/108/EC and Part 15 of the FCC Rules. The connections conducting HF signals must not be damaged or altered in any way by the user.

TAKE CARE OF YOUR SAFETY

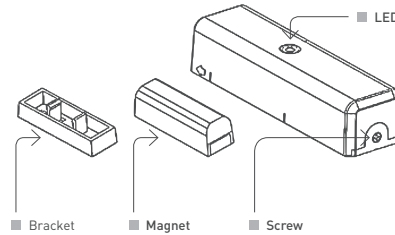
Display extreme caution when using ladders or steps, please follow manufacturer's instructions. Be careful when using hand and power tools and follow the manufacturer's guidelines when using them. Take care that the correct tools are used. Wear goggles or protective clothing where required.

INTRODUCTION

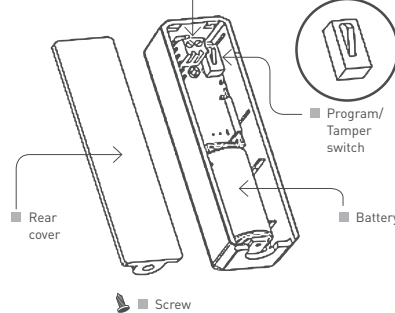
Thanks for choosing the Zipato's wireless door/window sensor to increase your home security. This sensor is a Z-Wave enabled device (interoperable, two-way RF mesh networking technology) and is fully compatible with any Z-Wave enabled network. Every mains powered Z-Wave enabled device acts as a signal repeater and multiple devices result in more powerful transmission routes which helps eliminate "RF dead-spots". Like all Z-Wave devices displaying the Z-Wave logo, Zipato Door/Window Sensor can also be used with various Z-Wave networks and controllers, regardless of the manufacturer. This sensor monitors door/window and send Z-Wave signal when door or window is opened and closed.

OVERVIEW

FOR INDOOR USE ONLY



Reserved for external switch connection



PACKAGE CONTENT

1PC	Door/Window Sensor
1PC	Bracket for Contact Magnet
1PC	Magnet
2PCS	Adhesive tape for Magnet/sensor
1PC	CR123A Lithium battery
4PCS	Screws for bracket/sensor
1PC	Quick Installation guide

FEATURES

- Door/Windows sensor that can be mounted to any door window or other opening object
- New Z-Wave 500 series chip supports multichannel operation and higher data rates (9.6/40/100kbps)
- Can be used with various Z-Wave networks/controllers, regardless of the manufacturers
- Very low power power consumption
- LED indicator
- Over-the-air firmware update
- Easy installation

SPECIFICATION

PROTOCOL	Z-Wave Plus
POWER	CR123A battery
OPERATING VOLTAGE:	3.0V

OPERATING CURRENT	32.2 – 34.5 mA
STANDBY CURRENT	2.0 – 3.5 uA
OPERATING TEMPERATURE	-10°C – 60°C
RANGE	Up to 31 meter in line of sight (indoor use only)
MAGNETIC GAP	20mm
WEIGHT	38g
DIMENSIONS	Sensor: 20 x 25 x 88 mm; Magnet: 21 x 12 x 38mm
PACKAGE WEIGHT	70g
PACKAGE DIMENSIONS	102 x 36 x 43mm
REGULATIONS	EMC 2004/108/EC, R&TTE 1995/5/EC, LVD 2006/95/EC, FCC PART 15
WARRANTY	1 year

MODEL AND FREQUENCIES

EUROPEAN UNION - EU version	vs-zd2102.eu / 868.42 MHz
UNITED STATES - US version	vs-zd2102.us / 908.42MHz
RUSSIA - RU version	vs-zd2102.ru / 869.02MHz
ISRAEL - IS version	vs-zd2102.is / 916.02MHz
AUSTRALIA - AU version	vs-zd2102.au / 921.42MHz
INDIA - IN version	vs-zd2102.in / 865.20MHz

INSTALLATION AND JOINING TO Z-WAVE NETWORK

Notice: If you are installing the entire Z-Wave system for the first time, please refer to the installation guide of your Z-Wave Controller before installing Door/Window Sensor.

- Unscrew the screw fastening the rear cover.
- Slide the rear cover down.
- Use the screws or adhesive tape to affix the rear cover on the frame along the opening edge of door / window.
- Insert a CR123A battery into the battery compartment and LED will start to flash slowly, which means the device didn't go through "inclusion" phase.
- "Inclusion" (adding) to the network: Put your Z-Wave Controller into "inclusion" mode, and follow the instructions to add the Door/Window Sensor to your controller network. To start the "inclusion" mode, recommended distance between sensor and controller is up to 1 meter. Hold pressed the program switch of Door/Window Sensor for at least 1 second. The LED on the Door/Window Sensor should go solid, if not, please try again.

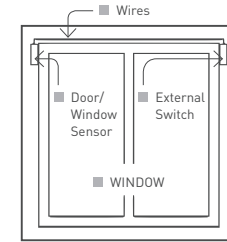
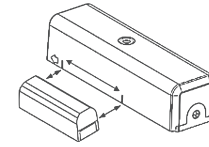
"Exclusion" (removing) from the network: Put your Z-Wave Controller into "exclusion" mode, and follow the instructions to remove the Door/Window Sensor from your controller. Hold pressed the program switch of Door/Window Sensor for at least 1 second for successful exclusion.

"Association": remove the cover of the Door/Window Sensor to get it into "Awake" mode, then put your Z-Wave Controller into "Association", and follow the instructions to associate the Door/Window Sensor with the other device. Close the cover back after "association" is complete, after which the Door/Window Sensor will go into "Sleep" mode for power saving reasons. One association group is supported (5 nodes).

"Awake" mode: Leave the "Sleep" mode by removing the cover of Door/Window Sensor, to allow your Z-Wave Controller to do "Inclusion", "Exclusion", "Association" and to reply and receive the commands from controller.

- Slide back the rear cover and screw fastening with the front cover, the LED should go off.
- Fix the Magnet by using the adhesive tape or fixing screws, locate the Magnet close to the Door/Window Sensor sensor. The distance between these two devices should be up to 1.9cm.
- External Switch: If your window needs two sensors for full monitoring, you can use external switch to connect with Door/Window sensor in order to extend detection capability. The Door/Window Sensor has 2 normally closed contact terminals. These can be used for additional external switch wired contacts. The external switch will send signal according to the Status/Signal table to any association nodes by opening/closing the window/door.

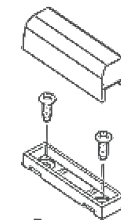
The magnet shall be fixed close to the specific area, and the distance from sensor shall not be over 2 cm



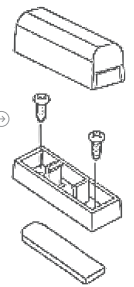
break the thin wall on cover so that external switch's wires can go through it. Loose two screws to insert the wire conducts, and then fasten the screws to tight the wires with the door/Window Sensor.



FIXED WITHOUT BRACKET



FIXED WITH BRACKET



USE SCREWS OR ADHESIVE TAPE

USE SCREWS OR ADHESIVE TAPE

OPERATION

- Opening the door/window to separate the magnet from the sensor will send signal to any association nodes according to the Status/Signal table below and the LED will flash once.
- During normal operation, LED will be turned off.

3 | If the sensor cover is removed, the tamper switch will send signal according to the Status/Signal table, and the LED will light up. Before replacing the cover, the sensor is in "Awake" mode. Same as external reed switch.

STATUS/SIGNAL

ALARM TYPE	Reed Switch	0x07
	Tamper Switch	
	External Switch	
ALARM EVENT	Reed Switch	0x02
	Tamper Switch	
	External Switch	
ALARM LEVEL	Reed Switch	Close: 0x00; Open 0xFF
	Tamper Switch	
	External Switch	

Z-WAVE COMMAND CLASSES

COMMAND_CLASS_BASIC
 COMMAND_CLASS_ALARM_V2
 COMMAND_CLASS_ASSOCIATION_V1
 COMMAND_CLASS_BATTERY
 COMMAND_CLASS_MANUFACTURER_SPECIFIC
 COMMAND_CLASS_SENSOR_BINARY
 COMMAND_CLASS_VERSION
 COMMAND_CLASS_WAKE_UP_V2

TROUBLESHOOTING

Having trouble installing your new product?

Zipato's website contains the latest user documentation and software updates for Zipato products and services:

www.zipato.com

You can also find answers in the Zipato Community at: community.zipato.com

Zipato Support: support@zipato.com

LIMITED PRODUCT WARRANTY

GENERAL TERMS

Nothing in this Limited Product Warranty affects your statutory rights as a consumer.

The Limited Product Warranty set forth below is given by Tri plus grupa d.o.o. [Europe] (herein referred to as "ZIPATO"). This Limited Product Warranty is only effective upon presentation of the proof of purchase. Upon further request by ZIPATO, this warranty card may be presented, too.

EXCEPT AS EXPRESSLY SET FORTH IN THIS LIMITED WARRANTY, ZIPATO MAKES NO OTHER WARRANTIES, EXPRESS OR IMPLIED, INCLUDING ANY IMPLIED WARRANTIES OF MERCHANTABILITY AND FITNESS FOR A PARTICULAR PURPOSE. ZIPATO EXPRESSLY DISCLAIMS ALL WARRANTIES NOT STATED IN THIS LIMITED WARRANTY. ANY IMPLIED WARRANTIES THAT MAY BE IMPOSED BY LAW ARE LIMITED IN DURATION TO THE LIMITED WARRANTY PERIOD. TO THE EXTENT ALLOWED BY LOCAL LAW, THE REMEDIES IN THIS WARRANTY STATEMENT ARE CUSTOMER'S

SOLE AND EXCLUSIVE REMEDIES AGAINST ZIPATO. THEY DO NOT, HOWEVER, AFFECT OR RESTRICT THE RIGHTS YOU HAVE AGAINST THE BUSINESS YOU BOUGHT A ZIPATO PRODUCT FROM. IN NO EVENT WILL ZIPATO BE LIABLE FOR LOSS OF DATA OR FOR INDIRECT, SPECIAL, INCIDENTAL, CONSEQUENTIAL (INCLUDING LOST PROFIT OR DATA), OR OTHER DAMAGE, WHETHER BASED IN CONTRACT, TORT, OR OTHERWISE. HOWEVER, NOTHING IN THIS AGREEMENT LIMITS ZIPATO'S LIABILITY TO YOU (I) IN THE EVENT OF DEATH OR PERSONAL INJURY TO THE EXTENT RESULTING FROM ZIPATO'S NEGLIGENCE, OR (II) TO THE EXTENT RESULTING FROM ANY FRAUDULENT MISREPRESENTATION ON THE PART OF ZIPATO, OR (III) TO THE EXTENT ARISING UNDER PART 1 OF THE CONSUMER PROTECTION ACT 1987 OF THE UNITED KINGDOM. SOME STATES OR COUNTRIES DO NOT ALLOW: (1) A DISCLAIMER OF IMPLIED WARRANTIES; (2) A LIMITATION ON HOW LONG AN IMPLIED WARRANTY LASTS OR THE EXCLUSION; OR (3) LIMITATION OF INCIDENTAL OR CONSEQUENTIAL DAMAGES FOR CONSUMER PRODUCTS. IN SUCH STATES OR COUNTRIES, SOME EXCLUSIONS OR LIMITATIONS OF THIS LIMITED WARRANTY MAY NOT APPLY TO YOU. THIS LIMITED WARRANTY GIVES YOU SPECIFIC LEGAL RIGHTS. YOU MAY ALSO HAVE OTHER RIGHTS THAT MAY VARY FROM STATE TO STATE OR FROM COUNTRY TO COUNTRY. YOU ARE ADVISED TO CONSULT APPLICABLE STATE OR COUNTRY LAWS FOR A FULL DETERMINATION OF YOUR RIGHTS.

This Limited Product Warranty applies to ZIPATO branded hardware products (collectively referred to as "ZIPATO Hardware Products") sold by ZIPATO [Europe], its European subsidiaries, affiliates, authorized resellers, or country distributors (collectively referred to as "ZIPATO Resellers") with this Limited Product Warranty.

The term "ZIPATO Hardware Product" is limited to the hardware components and all its internal components including firmware. The term "ZIPATO Hardware Product" DOES NOT include any software applications or programs.

GEOGRAPHICAL SCOPE OF THE LIMITED PRODUCT WARRANTY

This Limited Product Warranty is applicable to Hardware Products sold by Zipato Resellers in all countries listed at the beginning of this document under the heading "Countries in which this ZIPATO Limited Product Warranty applies". The Limited Product Warranty will be honored in any country where ZIPATO or its authorized service providers offer warranty service subject to the terms and conditions set forth in this Limited Product Warranty. However, warranty service availability and response times may vary from country to country and may also be subject to registration requirements.

LIMITATION OF PRODUCT WARRANTY

ZIPATO warrants that the products described below under normal use are free from material defects in materials and workmanship during the Limited Product Warranty Period set forth below ("Limited Product Warranty Period"), if the product is used and serviced in accordance with the user manual and other documentation provided to the purchaser at the time of purchase (or as amended from time to time).

ZIPATO does not warrant that the products will operate uninterrupted or error-free or that all deficiencies, errors, defects or non-conformities will be corrected.

This warranty shall not apply to problems resulting from: (a) unauthorized alterations or attachments; (b) negligence, abuse or misuse, including failure to operate the product in accordance with specifications or interface requirements; (c) improper handling; (d) failure of goods or services not obtained from ZIPATO or not subject to a then-effective ZIPATO warranty or maintenance agreement; (e) improper use or storage; or (f) fire, water, acts of God or other catastrophic events. This warranty shall also not apply to any particular product if any ZIPATO serial number has been removed or defaced in any way.

ZIPATO IS NOT RESPONSIBLE FOR DAMAGE THAT OCCURS AS A RESULT OF YOUR FAILURE TO FOLLOW THE INSTRUCTIONS FOR

THE ZIPATO HARDWARE PRODUCT.

LIMITED PRODUCT WARRANTY PERIOD

The Limited Product Warranty Period starts on the date of purchase from ZIPATO. Your dated sales or delivery receipt, showing the date of purchase of the product, is your proof of the purchase date. You may be required to provide proof of purchase as a condition of receiving warranty service. You are entitled to warranty service according to the terms and conditions of this document if a repair to your ZIPATO branded hardware is required within the Limited Product Warranty Period.

[Other than in respect of products for domestic use (in particular those listed in the first and last boxes in the table below), this Limited Product Warranty extends only to the original end user purchaser of this ZIPATO Hardware Product and is not transferable to anyone who obtains ownership of the ZIPATO Hardware Product from the original end-user purchaser.

PRODUCT WARRANTY PERIOD TABLE

PRODUCT TYPE	Door/Window Sensor
PRODUCT WARRANTY PERIOD	One (1) year

IMPORTANT

The content of "Product Type" listed above is subject to change; please refer to the www.zipato.com for latest update.

PERFORMANCE OF THE LIMITED PRODUCT WARRANTY

If a product defect occurs, ZIPATO's sole obligation shall be to repair or replace any defective Zipato Hardware Product free of charge provided it is returned to an Authorized ZIPATO Service Centre during the Limited Warranty Period. Such repair or replacement will be rendered by ZIPATO at an Authorized ZIPATO Service Centre. All component parts or hardware products that are replaced under this Limited Product Warranty become the property of ZIPATO. The replacement part or product takes on the remaining Limited Warranty Period of the replaced part or product. The replacement product need not be new or of an identical make, model or part; ZIPATO may in its discretion replace the defective product (or any part thereof) with any reconditioned equivalent (or superior) product in all material respects to the defective product.

WARRANTOR

Tri plus grupa d.o.o.
 Banjaviceva 11
 10 000 Zagreb
 CROATIA

TEL +385 (0)1 4004 404
 FAX +385 (0)1 4004 405

DECLARATION OF CONFORMITY



The manufacturer Tri plus grupa d.o.o declares under our sole responsibility that the product:

Marketing model: Door/Window Sensor
 Regulatory model: vs-zd2102
 Trade/Brand name: Zipato

is in conformity with the Low Voltage Directive 2006/95/EC, EMC Directive 2004/108/EC and R&TTE Directive 1995/5/EC and carries the CE marking accordingly. The following harmonised standards were applied:

R&TTE (1995/5/EC)
 EN 300 220-1: V2.4.1

EN 300 220-2: V2.4.1

EMC (2004/108/EC)
 EN 301 489-1: V1.9.2
 EN 301 489-3: V1.6.1

LVD (2006/95/EC)
 EN 60950-1:2006 + A11:2009 + A1:2010 + A12:2011

Changes or modifications not expressly approved by Tri plus grupa d.o.o. for compliance could void the user's authority to operate the equipment.



THIS DEVICE COMPLIES WITH PART 15 OF THE FCC RULES.

Operation is subject to the following two conditions:
 1 | this device may not cause harmful interference, and
 2 | this device must accept any interference received, including interference that may cause undesired operation.

NOTE: Changes or modifications not expressly approved by Zipato for compliance could void the user's authority to operate the equipment. This equipment has been tested and found to comply with the limits for a Class B digital device, pursuant to Part 15 of the FCC Rules. These limits are designed to provide reasonable protection against harmful interference in a residential installation. This equipment generates, uses and can radiate radio frequency energy and, if not installed and used in accordance with the instructions, may cause harmful interference to radio communications. However, there is no guarantee that interference will not occur in a particular installation. If this equipment does cause harmful interference to radio or television reception, which can be determined by turning the equipment off and on, the user is encouraged to try to correct the interference by one or more of the following measures:

- Reorient or relocate the receiving antenna.
- Increase the separation between the equipment and receiver.
- Connect the equipment into an outlet on a circuit different from that to which the receiver is connected.
- Consult the dealer or an experienced radio/TV technician for help.

DISPOSING AND RECYCLING YOUR PRODUCT

When it reaches end of life, dispose of the product according to your local environmental laws, guidelines and regulations.

BATTERY DISPOSAL

Dispose of batteries according to your local environmental laws, guidelines and regulations.



This symbol on the product or packaging means that according to local laws and regulations needs to be disposed of separately from household waste. Once this product has reached the end of its life, please take it to a collection point (recycle facilities) designated by your local authorities, some will accept your product for free or simply drop it off at your Zipato re-seller store. By recycling the product and its packaging in this manner you help to conserve the environment and protect human health. At Zipato, we understand and are committed to reducing any impact our operations and products may have on the environment. To minimize this impact Zipato designs and builds its products to be as environmentally friendly as possible, by using recyclable, low toxic materials in both products and packaging.

COPYRIGHT

© 2015 Tri plus grupa d.o.o. All Rights Reserved.

No part of this manual may be reproduced or transmitted in any form without the expressed, written permission of Tri plus grupa d.o.o.